



Blank Version

# Skate Catalog

# 2015

[www.seskate.com](http://www.seskate.com) • [www.roller-rink.com](http://www.roller-rink.com)

Available At:

\$1.00





**PACER GTX-500 MACH-5**

**Pacer GTX-500 Mach-5 (P-217)\***

Pacer's GTX-500 is the best-selling skate being used in roller rinks today. The matte finish and ABEC-3 bearings give it a great look and performance.

**Boots:** Synthetic boots with Velcro power-straps.

**Chassis:** Nylon plates with fixed toe stops.

**Wheels:** Mach-5 63mm x 35mm wheels with mag hubs.

**Bearings:** ABEC-3.

**Sizes:** Men's black 1-12; men's white 1-10.

**Price:** \$ \_\_\_\_\_



**Rock GT-50**

**Rock GT-50\***

The GT-50 is just a great, all-around skate. This comfortable skate has a little extra room for those with wider feet, and its padding makes it comfortable for everyone.

**Boots:** Rock GT-50 boots in either black or white.

**Chassis:** Rock double-action plates with adjustable toe stops.

**Wheels:** Black & White swirled GT-50 wheels.

**Bearings:** Sure-Grip ABEC-5.

**Sizes:** Men's black 1-15; men's white 1-10; men's grey 4-13.

**Price:** \$ \_\_\_\_\_  
(sizes 14 & 15 / \$ \_\_\_\_\_)



**PACER CHARGER**

**Pacer Charger (P970)\***

This youth speed skate looks awesome at the rink.

**Boots:** Speed profile with padded collar and Velcro power straps.

**Chassis:** Pacer polymer plates with fixed toe stops.

**Wheels:** 54mm polyurethane injected wheels.

**Bearings:** 608ZB sealed.

**Sizes:** Boy's black 10J-4; girl's white 10J-4.

**Price:** \$ \_\_\_\_\_



**VANILLA JUNIOR**

**Vanilla Junior\***

All-new Junior skate featuring the style and comfort of denim.

**Boots:** Vanilla Junior model with durable lining, fully-stitched rubber outsole, and leather trim.

**Chassis:** Vanilla nylon frame featuring aluminum double-action trucks.

**Wheels:** Backspin 62mm wheels with nylon hubs.

**Bearings:** ABEC-7.

**Styles:** Denim (Denim & Wht), Smurf (Black & Blue), Tuxedo (Bk & Wht), Altitude (Grey & Neon)

**Sizes:** Men's 3-11.

**Price:** \$ \_\_\_\_\_



**CHICAGO 400/405**

**Chicago 400/405\***

This is a good entry-level skate for both children and adults.

**Boots:** Chicago synthetic boots.

**Chassis:** Chicago deluxe aluminum plates with double-action trucks and jump-bars.

**Wheels:** Chicago urethane rink wheels.

**Bearings:** Precision.

**Sizes:** Men's black

(405) 1-13;

ladies white (400) 1-11.

**Price:** \$ \_\_\_\_\_



**TOUR THOR 909 (52TA)**

**Tour Thor 909 (52TA)\***

Offers great features at a great price.

**Boots:** Deluxe EVA comfort padding with custom reinforced ankle stabilizer and quick-dry lining.

**Frames:** Aluminum 6000 series.

**Wheels:** 76mm Tour Force Speed Formula Wheels.

**Bearings:** ABEC-7 Race Series.

**Sizes:** Men's 5-13.

**Price:** \$ \_\_\_\_\_



**STINGER 5.2 (1-141)**

**Stinger 5.2 (1-141)\***

All-new adjustable youth inline skate in girl's or boy's version.

**Uppers:** Adjustable comfort-fit washable liner and cam-lever buckles.

**Frames:** Polymer frames.

**Bearings:** Silver-5 Speed Rated (carbon).

**Wheels:** Polyurethane wheels.

**Sizes:** Boys & girls small (12J-2) and medium (3-6).

**Price:** \$ \_\_\_\_\_

**\*Package Outfit,  
no substitutions.**

**†Custom Package,  
no returns.**



## Sizing

The correct size is obviously the starting point when purchasing a new pair of skates. A skate should fit your foot like a pair of shoes, so you should allow between 1/4" and 1/2", depending on whether your foot is still growing. If you are a woman, make sure you pay special attention to the sizes that are available in each model. Some of the skates come in men's or ladies sizes, but some are only available in men's sizes. You may need to go down one size if you have to purchase a men's. Also, talk to the sales person where you received this catalog about whether a model tends to run a little large or small. If purchasing a custom package, you may want to order a boot only, so it can be returned if you need a different size. Also, be sure your new skates fit before you go skating on them.

There is no such thing as a "correct" plate size. Skaters use different lengths of plates depending on what type of skating they do or what's most comfortable for them. Below is some plate mounting terminology:

**Short Mount:** This method is preferred by many of the Derby skaters. Using a shorter plate, brings the axles closer together allowing for better high-speed cornering. The rear wheels are brought forward a little and the front wheels are at the widest part of the foot. New skaters may feel a little insecure with this mount, but once you find your "center" it's one of the best mounts for skating.

**Regular Mount:** A regular or standard mount is the most common. Most "out-of-the-box" package outfits utilize a standard mount. The rear wheels set back just a little more than a short mount. This mount gives new skaters a little more stability.

**Long Mount:** A long mount uses the longest plate that will fit on the boot. Jam skaters use the long mount because it enables them to perform tricks that involves spinning on the front wheels. The long mount also helps protect the toe of the boot. A long mount is very helpful for performing tricks and protecting the shoe, but it can also tire out the legs of someone that just enjoys skating around the oval.

## Skate Terms

Some basic skate terms we are asked about are "durometer" and "ABEC."

**Durometer** refers to the hardness of a skate wheel. Typically, a soft wheel is grippy but slow, and a firm wheel is fast but slick. A low durometer represents a softer wheel, and a high durometer represents a firmer one. When skating outdoors, you should always try to use a wheel with a durometer of 88A or less. Most recreational, indoor wheels have a durometer of 95A which gives them a good roll, but they have less traction in tight turns. An indoor wheel with a durometer of 94A or less is considered to have "grip." An indoor wheel of 95A or higher is considered to be "firm."

The term "ABEC" stands for the Annular Bearing Engineers' Committee, and this committee determines standards for the Anti-Friction Bearing Manufacturers Association. Most bearings are given an ABEC rating to determine their heat tolerance, rotating accuracy, and other measurements. Basically, the higher the number, the better the bearing should be, but this is not a universal truth. Some companies, like Powell-Bones, sell bearings that are not rated. Yet, Powell-Bones manufactures some of the highest quality bearings available. Using the ABEC system when determining which bearing to purchase is a good starting point, but you should always be willing to talk to a sales associate about which bearing is the best for you.

## Comparing Skates

When comparing the different skates pictured in this catalog be sure to look at the individual components. The boots, chassis, wheels, and bearings all work together in the performance of a pair of skates.

**Boots:** First determine whether you want a high-top or low-cut boot. This should be the easiest decision. Then determine what type of material you would like. Traditionally, leather has been the best material you could use to manufacture boots, but some of them are now made with a micro-fiber material which may be more durable than leather. If you are still growing, you may wish to go with a less expensive material, for you'll probably grow out of your skates before you wear them out.

**Chassis:** The chassis or plates are what make your skates work. They are typically made with aluminum or some form of plastic or nylon. One material is not necessarily better than the other. They are both very strong, and some of the high-end aluminum plates are actually lighter than their plastic counterparts. You should determine whether the type of skating you do works best with a single-action or double-action truck. Single-action means that the truck, the part of the skate that holds the wheels, has only one cushion, and they are at a 45 degree angle. They allow you to be closer to the floor and give you a feeling of stability when cornering at high speeds. Double-action means that each truck has two cushions and they are at a 10 degree angle. Double-action trucks allow for quicker turns, and make your skates feel much more responsive. Double-action trucks are the most common.

**Wheels:** When choosing a wheel, you should first determine whether you want a speed-type wheel, wide profile, or an artistic-type wheel, narrow profile. Speed wheels give you more stability and traction when cornering at high speeds, and artistic wheels allow you to make more responsive turns. Also, determine what durometer, or hardness, you desire in your wheels.

**Bearings:** On ABEC rated bearings, the higher the number, the better the bearing. Keep in mind that one company's ABEC-5 is not always the same as another company's ABEC-5. Also, there are some companies that don't use an ABEC rating on any of their bearings. If you want a good bearing, buy an ABEC-3 or higher, and if you want the best bearing buy a Swiss or ceramic.

**southeastern  
SKATE SUPPLY INC**

www.seskate.com

www.roller-rink.com

### Table of Contents

Page.....	Category
4-5.....	Kid's
6-21.....	Speed / Derby / Low Tops
24-27.....	High Tops / Artistic
29-31.....	Outdoor
34-37.....	Speed / Derby Wheels
38-39.....	Art / Rec Wheels
39.....	Outdoor Wheels
42-43.....	Boots
46-47.....	Plates
49-50.....	Accessories / Stoppers
49-50.....	Tools / Lube
51.....	Bearings
54-55.....	Helmets & Pads
56.....	Laces & Bags / Skate Cases
57.....	Inlines
58.....	Inline Race
59.....	Inline Hockey





**CHICAGO SIDEWALK SKATE**

**Chicago Sidewalk Skate (100/105)\***

This skate can be used in the rink or on the sidewalk. It will help a child gain confidence skating on their own skates.

**Boots:** Chicago boots with padded ankle collar and Velcro strap.

**Chassis:** Chicago plates with adjustable trucks.

**Wheels:** Chicago wheels.

**Bearings:** Semi-precision.

**Sizes:** Boy's black 12J-5; girl's white 12J-5.

**Price:** \$ \_\_\_\_\_

**\*Package Outfit,  
no substitutions.**

**†Custom Package,  
no returns.**



**CHICAGO ADJUSTABLE**

**Chicago Adjustable Quad (210/215)\***

This is an all-new adjustable skate from Chicago.

**Boots:** Adjustable shell with breathable mesh liners and adjustable micro-ratchet buckles.

**Chassis:** Easy push-button adjustable plates.

**Wheels:** Chicago all-purpose wheels.

**Bearings:** 608Z Semi Precision.

**Sizes:** Boys blue/silver/black small (10J-13J),

medium (1-4); girls purple/silver/white small

(10J-13J), medium (1-4).

**Price:** \$ \_\_\_\_\_



**PACER ZTX**

**Pacer ZTX  
(P361/P961)\***

Pacer's all-purpose kid's skate can be used indoors or out.

**Boots:** Pacer children's boot with ankle support straps.

**Chassis:** Pacer plastic plates.

**Wheels:** Pacer urethane wheels.

**Bearings:** Sealed.

**Sizes:** Boy's black 12J-5; girl's white 12J-5.

**Price:** \$ \_\_\_\_\_



**CHICAGO KID'S RINK SKATE**

**Chicago Kid's Rink Skate (1900/1905)\***

This child's skate is for those who want a more traditional look.

**Boots:** Chicago Tigerlon boots.

**Chassis:** Chicago plates with adjustable trucks.

**Wheels:** Chicago 52mm urethane wheels.

**Bearings:** Semi-precision.

**Sizes:** Boy's black (1905) 10J-4;

girl's white (1900) 10J-4.

**Price:** \$ \_\_\_\_\_



**PACER XT-70**

**Pacer XT-70 (P960)\***

This adjustable skate from Pacer can be used indoors or out, and it is great for growing children.

**Boots:** Adjustable shells with removable comfort liners.

**Chassis:** Plastic, adjustable plates.

**Wheels:** Polyurethane injected wheels.

**Bearings:** Long Life

**Sizes:** Adjustable 12J-6. Call for sizing detail.

**Prices:** \$ \_\_\_\_\_

**Please Note:**

Manufacturers often make running product changes throughout the year. Items may not come as pictured.



**PACER CHARGER****Pacer Charger (P970)\***

This youth speed skate looks awesome at the rink.

**Boots:** Speed profile with padded collar and Velcro power straps.

**Chassis:** Pacer polymer plates with fixed toe stops.

**Wheels:** 54mm polyurethane injected wheels.

**Bearings:** 608ZB sealed.

**Sizes:** Boy's black 10J-4; girl's white 10J-4.

**Price:** \$ \_\_\_\_\_

**PACER COMET****Pacer Comet (P971)\***

Popular light-up skate from Pacer.

**Boots:** Speed profile with padded collar and Velcro power straps.

**Chassis:** Pacer polymer plates with fixed toe stops.

**Wheels:** 54mm polyurethane injected wheels. Outside wheels light up as you skate.

**Bearings:** 608ZB sealed.

**Sizes:** Boy's silver 12J-5; girl's purple 12J-5.

**Price:** \$ \_\_\_\_\_

**DOMINION ESPRIT****Dominion Esprit (D278) Limited Availability\***

Traditional skate with a more professional fit.

**Boots:** Dominion synthetic boots.

**Chassis:** Dominion Marathon plates with fixed toe stops.

**Wheels:** Dominion urethane wheels.

**Bearings:** Long-life.

**Sizes:** Boy's/men's black 8J-13; girl's/ladies white 9J-11.

**Price:** \$ \_\_\_\_\_

(Limited availability)

**CANDI GIRL****Candi Girl\***

This is all-new recreational skate from Roller Derby.

**Boots:** Split-suede leather uppers in four color choices.

**Chassis:** Aluminum plates with double-action trucks and fixed toe stops.

**Wheels:** 66mm poured urethane wheels in 82A.

**Bearings:** ABEC-5 Carbon bearings.

**Sizes:** 3-11

**Price:** \$ \_\_\_\_\_

\*Package Outfit,  
no substitutions.

†Custom Package,  
no returns.



**CHICAGO BULLET****Chicago Bullet (B100)\***

This speed skate from Chicago remains one of the best-selling skates of all-time.

**Boots:** Chicago vinyl speed boots.

**Chassis:** Lightweight, plastic plates with aluminum trucks.

**Wheels:** Bullet 58mm speed-style wheels with hubs.

**Bearings:** Carbon ABEC-1.

**Sizes:** Men's black 1-12; ladies white 1-10.

**Price:** \$ \_\_\_\_\_

**PACER GTX-500 MACH-5****Pacer GTX-500 Mach-5 (P-217)\***

Pacer's GTX-500 is the best-selling skate being used in roller rinks today. The matte finish and ABEC-3 bearings give it a great look and performance.

**Boots:** Synthetic boots with Velcro power-straps.

**Chassis:** Nylon plates with fixed toe stops.

**Wheels:** Mach-5 63mm x 35mm wheels with mag hubs.

**Bearings:** ABEC-3.

**Sizes:** Men's black 1-12; men's white 1-10.

**Price:** \$ \_\_\_\_\_

**PACER HEART THROB****Pacer Heart Throb (P-218)\***

This fun skate from Pacer will be sure to attract attention.

**Boots:** Synthetic boots with a fun, playful pattern.

**Chassis:** Nylon plates with fixed toe stops.

**Wheels:** 64mm x 35mm wheels with mag hubs.

**Bearings:** Chrome ABEC-5.

**Sizes:** Ladies black graffiti 1-10; ladies red graffiti 1-10.

**Price:** \$ \_\_\_\_\_

**ROLLER DERBY ELITE STOMP 5****Roller Derby Elite Stomp 5\***

The Stomp-5 is the latest addition to Roller Derby's Elite line of skates.

**Boots:** PU upper in 5 color choices.

**Chassis:** Nylon plates with double-action trucks and adjustable toe stops.

**Wheels:** 63mm Urethane speed wheels.

**Bearings:** ABEC-9 Chrome bearings.

**Sizes:** Men's 4-13 Black, Green, Pink, Purple, or Red.

**Price:** \$ \_\_\_\_\_



\*Package Outfit,  
no substitutions.

†Custom Package,  
no returns.



**Rock GT-50****Rock GT-50\***

The GT-50 is just a great, all-around skate. This comfortable skate has a little extra room for those with wider feet, and its padding makes it comfortable for everyone.

**Boots:** Rock GT-50 boots in either black, white, or grey.

**Chassis:** Rock double-action plates with adjustable toe stops.

**Wheels:** Black & White swirled GT-50 wheels.

**Bearings:** Sure-Grip ABEC-5.

**Sizes:** Men's black 1-15; men's white 1-10; men's grey 4-13.

**Price:** \$ \_\_\_\_\_  
(sizes 14 & 15 / \$ \_\_\_\_\_)

**GT-50 CLAWZ****GT-50 CLAWZ****GT-50 Clawz†**

Personalize your GT-50's, and upgrade their performance without breaking the bank. Pick out your favorite color of Clawz wheels.

**Boots:** Rock GT-50 boots in either black, white, or grey.

**Chassis:** Rock double-action plates with adjustable toe stops.

**Wheels:** Clawz wheels in your choice of colors.

**Bearings:** Lynx ABEC-7 racing.

**Sizes:** Men's black 1-15; men's white 1-10; men's grey 4-13.

**Price:** \$ \_\_\_\_\_  
(sizes 14 & 15 / \$ \_\_\_\_\_)

**\*Package Outfit,  
no substitutions.**

**†Custom Package,  
no returns.**

**Rock GT-50 HEAT****Rock GT-50 Heat†**

Add some performance to your GT-50's.

**Boots:** Rock GT-50 boots in either black or white.

**Chassis:** Rock double-action plates with adjustable toe stops.

**Wheels:** BackSpin's all-new Heat Series wheel. Can order any BackSpin wheel with PC hubs at the same price.

**Bearings:** Lynx ABEC-7 racing.

**Sizes:** Men's black 1-13; men's white: 1-10; men's grey 4-13.

**Price:** \$ \_\_\_\_\_  
(sizes 14 & 15 / \$ \_\_\_\_\_)





**Simulation**

Pacer P.O. box 930 • Litchfield, IL 62056 • Phone: 217.324.3001 • Fax: 217.324.2213





*Sure-Grip*  
SKATE CO

SUREGRIP.COM



**Rock GT-50 Custom****GT-50 Custom†**

Get out of the ordinary and step into the extraordinary. Set your GT-50's apart with your own custom look.

**Boots:** Rock GT-50 boots in either black or white.

**Chassis:** Rock plates in your choice of 9 different colors.

**Wheels:** Clawz 62mm wheels in your choice of 9 different colors.

**Laces:** Pick out the laces of your choice.

**Bearings:** Lynx ABEC-7 racing.

**Sizes:** Men's black 1-13; men's white 1-10.

**Price:** \$ \_\_\_\_\_

**\*Package Outfit,  
no substitutions.**

**†Custom Package,  
no returns.**

**Please Note:**

Manufacturers often make running product changes throughout the year. Items may not come as pictured.

**SURE-GRIP BOXER DERBY****Sure-Grip Boxer Derby\***

"I am leaving. I am leaving. But, the fighter still remains."  
The Boxer

**Boots:** Synthetic leather Boxer boots.

**Chassis:** Rock nylon plates with double-action trucks and adjustable toe stops.

**Wheels:** Boxer Derby 59mm wheels (89A).

**Bearings:** Sure-Grip ABEC-7 bearings.

**Sizes:** Men's black 3-10.

**Price:** \$ \_\_\_\_\_

**SURE-GRIP BLAST****Blast (Rink Only Skate)\***

The Sure-Grip Blast is designed specifically for those that simply love being at the rink. Its durable design is perfect for those who can't wait to get to the rink on Friday and Saturday nights.

**Boot:** Blast boot from Sure-Grip with Velcro power-strap.

**Chassis:** Rock nylon plates with double-action trucks and adjustable toe stops.

**Wheels:** All-new Blast wheels from Sure-Grip.

**Bearings:** Sure-Grip ABEC-5.

**Sizes:** Men's black 1-13.

**Price:** \$ \_\_\_\_\_

(Limited availability)





## REBEL FUGITIVE

### Rebel Fugitive\*

Your choice of Fugitive wheels turns the Rebel into a true Derby skate.

**Boots:** Sure-Grip leather boots with elastic tongue stays, ankle protection, and box-toe comfort-fit.

**Chassis:** Sure-Grip Probe plates in black with reverse kingpins and adjustable toe stops.

**Wheels:** Sure-Grip 62mm Fugitive hi-performance wheels in your choice of color.

**Bearings:** Sure-Grip ABEC-7.

**Sizes:** Men's Black 1-14; Men's White or Pink 3-11; Men's Yellow, Purple, or Blue 3-12; Men's Green or Red 3-13.

**Price:** \$ \_\_\_\_\_



## ROCK SKATE WITH FLAME DESIGN



### Rock Skate with Flame Design\*

Rock is constantly updating their line of Flame skates. The new purple version is very popular right now.

**Boots:** Rock speed boots with comfort padding, deluxe footbed, and embroidered flames.

**Chassis:** Rock nylon, double-action plates with adjustable toe stops.

**Wheels:** Sure-Grip Twister wheels.

**Bearings:** Sure-Grip ABEC-5.

**Sizes:** Men's 1-10 in Black/Blue, Black/Pink, Black/Red

Men's 3-10 in Purple/Silver

Men's 1-13 in Black/Green

**Price:** \$ \_\_\_\_\_



**REBEL TWISTER****SURE-Grip REBEL D.O.D.****Sure-Grip Rebel D.O.D.†**

This Rebel set-up gets you ready for Friday night skating or the upcoming Derby Bout.

**Boots:** Sure-Grip leather boots with elastic tongue stays, ankle protection, and box-toe comfort fit.

**Chassis:** Sure-Grip Probe plates in black with reverse kingpins and adjustable toe stops.

**Wheels:** RollerBones Day of The Dead derby/speed wheels in black or white. White (80A,86A,92A,94A,96A) or black (92A,96A).

**Bearings:** Lynx ABEC-7 racing bearings.

**Sizes:** Men's Black 1-14. Men's White or Pink 3-11. Men's Yellow, Purple, or Blue 1-12. Men's Green or Red 3-13.

**Price:** \$ \_\_\_\_\_

**Rebel Twister\***

Add a little twist to the Rebel.

**Boots:** Sure-Grip leather boots with elastic tongue stays, ankle protection, and box-toe comfort-fit.

**Chassis:** Sure-Grip Probe plates in black with reverse kingpins and adjustable toe stops.

**Wheels:** Sure-Grip Twister speed wheels.

**Bearings:** Sure-Grip ABEC-7.

**Sizes:** Men's Black 1-14

Men's White or Pink 3-11

Men's Yellow, Purple, or Blue 3-12

Men's Green or Red 3-13.

**Price:** \$ \_\_\_\_\_

**\*Package Outfit,  
no substitutions.**

**†Custom Package,  
no returns.**

**Please Note:**

Manufacturers often make running product changes throughout the year. Items may not come as pictured.



**Labeda Voodoo U-3 Outfit (L642)\***

Get off your rear and get into gear with Labeda's line of skates.

**Boots:** Stylish Satinene boots with comfort padding and hidden lace system.

**Chassis:** RTX6000 frame with adjustable toe stops.

**Wheels:** 63 x 42mm Labeda Cliff Hanger wheels.

**Bearings:** Chrome ABEC-9 Race Series.

**Sizes:** Men's black 4-13; men's red 4-13; and men's blue 4-13.

**Price:** \$ \_\_\_\_\_

**LABEDA VOODOO U-3****VOODOO ROCK****Voodoo Rock†**

Not to be confused with Fraggie Rock. Voodoo Rock is what you get when you combine the Labeda U-3 boot with Rock's most popular chassis.

**Boots:** Stylish Satinene boots with comfort padding and hidden lace system.

**Chassis:** Rock double-action plates in your choice of 9 different colors. Adjustable toe stops.

**Wheels:** Clawz 62mm speed wheel in your choice of 9 different colors.

**Bearings:** Lynx ABEC-7 racing.

**Sizes:** Men's 4-13 in your choice of Black, Blue, or Red.

**Price:** \$ \_\_\_\_\_

**LABEDA VOODOO U-7****Labeda Voodoo U-7 Outfit (L660)\***

Yes, the boot is leather; yes, the sole is stitched; yes, the sole is leather; no, it will not require a loan to purchase. The most affordable leather, stitched sole skate on the market.

**Boots:** Labeda full-grain leather boots with leather, stitched soles in black, white, or green.

**Chassis:** RTX6000 frame with adjustable toe stops.

**Wheels:** Labeda Night Ryder 63mm x 42mm wheels.

**Bearings:** Chrome ABEC-9 racing.

**Sizes:** Men's black (L660B); men's white (L660W); and men's green (L660G). 4-13 (halves 5.5 to 10.5).

**Price:** \$ \_\_\_\_\_



**U-7 NEUTRON ZOMBIE****U-7 Neutron Zombie†**

A true Friday night rink skate.

**Boots:** Labeda full-grain leather boots with leather stitched soles in black, white, or green.

**Chassis:** The Neutron 6000 is an extruded aluminum plate with reverse kingpins.

**Wheels:** Sure-Grip Zombie wheels in your choice of 58mm, 62mm narrow, or 62mm wide in 89A, 92A, 95A, or 98A.

**Bearings:** Lynx ABEC-7 racing.

**Sizes:** Men's black, white, or green 4-13 (halves 5.5 to 10.5)

**Price:** \$ \_\_\_\_\_

**STOMP FACTOR-2 PACKAGE****Stomp Factor-2 Package (RE315)\***

Roller Derby introduces the Factor-2 for those who are regular rink skaters or for "Fresh Meat" that is just entering into Derby.

**Boots:** All-new boots from Roller Derby's Elite line. The Stomp Factor-2 boots feature top-grain leather with power-straps and molded sole.

**Chassis:** Roller Derby's RTX6000 frame with adjustable toe stops.

**Wheels:** Raider 62mm x 40mm speed wheels.

**Bearings:** Bevo Gold-7 racing.

**Sizes:** Men's black 4-12.

**Prices:** \$ \_\_\_\_\_

**STOMP FACTOR-2 PLUS****Stomp Factor-2 Plus Package (RE320)\***

Combines the Factor-2 boot with the all-new aluminum chassis.

**Boots:** All-new boots from Roller Derby's Elite line. The Stomp Factor-2 boots feature top-grain leather with power-straps and molded sole.

**Chassis:** The Neutron 6000 is an extruded aluminum plate with reverse kingpins.

**Wheels:** Militia 59mm x 38mm wheels that combine grip and roll.

**Bearings:** SWISS Elite.

**Sizes:** Men's black 4-12.

**Price:** \$ \_\_\_\_\_

**STOMP FACTOR-1 COMBO****Stomp Factor-1 Combo (R364)\***

Stomp's top-of-the-line package for Derby.

**Boots:** The Factor-1 boot is top-grain leather and features leather, stitched soles. Available in black, green, or red.

**Chassis:** The all-new Octane Pro 7000 series extruded aluminum plates. They feature fully adjustable click-truck adjustment.

**Wheels:** Alpha 59mm x 38mm wheels with aluminum hubs.

**Bearings:** SWISS Elite.

**Sizes:** Men's black, green, or red 4-12.

**Price:** \$ \_\_\_\_\_

\*Package Outfit, no substitutions.

† Custom Package, no returns.





**STOMP FACTOR 1 W/G-ROD HP**

**Stomp Factor-1 w/ G-Rod HP†**

Combining the Stomp Factor-1 with Atom's new G-Rod HP.

**Boots:** The Factor-1 boot is top-grain leather and features leather, stitched soles. Available in black, green, or red.

**Chassis:** The Octane Pro 7000 series extruded aluminum plates. They feature fully adjustable click-truck alignment.

**Wheels:** Atom G-Rod HP wheels in 93A. Available in 59x35mm (white hub), 59x38mm (black hub), and 62x44mm (black hub).

**Bearings:** Lynx ABEC-7 racing.

**Sizes:** Men's black, green, or red 4-12.

**Price:** \$ \_\_\_\_\_



**STOMP FACTOR-1 AVENGER TURBO**



**Factor-1 Avenger Turbo\***

We've combined the Stomp Factor-1 boot with Sure-Grip's DA45 Avenger plate and RollerBones Turbo wheels.

**Boots:** The Factor-1 boot is top-grain leather and features leather, stitched soles. Available in black, green, or red.

**Chassis:** Sure-Grip's Avenger plates with double-action 45 degree trucks. Plates come in black aluminum or white magnesium. (Magnesium is an additional \$50)

**Wheels:** RollerBones Turbo wheels with aluminum hubs. Check page 37 for all of the wheel options.

**Bearings:** Lynx ABEC-7 racing.

**Sizes:** Men's black, green, or red 4-12.

**Price:** \$ \_\_\_\_\_ / \$ \_\_\_\_\_ (white magnesium plate)

**Note:** Avenger plates will come "short-mounted" unless specified when ordering.





**VANILLA JUNIOR****Vanilla Junior\***

All-new Junior skate featuring the style and comfort of denim.

**Boots:** Vanilla Junior model with durable lining, fully-stitched rubber outsole, and leather trim.

**Chassis:** Vanilla nylon frame featuring aluminum double-action trucks.

**Wheels:** Backspin 62mm wheels with nylon hubs.

**Bearings:** ABEC-7.

**Styles:** Denim (Denim & Wht), Smurf (Black & Blue), Tuxedo (Bk & Wht), Altitude (Grey & Neon)

**Sizes:** Men's 3-11.

**Price:** \$ \_\_\_\_\_

**VANILLA 360 PRO****Vanilla 360 PRO\***

Combine Vanilla's all-new 360 boots with your choice of nylon-hubbed Backspin wheels.

**Boots:** Vanilla's all-new jam boot.

**Chassis:** Vanilla Gorilla nylon plates with aluminum trucks.

**Wheels:** Your choice of any Backspin wheels.

**Bearings:** ABEC-7.

**Sizes:** Men's 4-13.

**Price:** \$ \_\_\_\_\_ (Nylon-hubbed wheels)  
\$ \_\_\_\_\_ (Aluminum-hubbed wheels)

**VANILLA BLACKOUT PRO****Vanilla Blackout PRO\***

Combine Vanilla's Brass Knuckle (Blackout) boots with your choice of nylon-hubbed Backspin wheels.

**Boots:** Vanilla Italian leather Brass Knuckle (Blackout) boots with stitched-leather soles.

**Chassis:** Vanilla Gorilla nylon plates with aluminum trucks.

**Wheels:** Your choice of any Backspin wheels with nylon hubs.

**Bearings:** ABEC-7.

**Sizes:** Ladies black 4-13 (halves 7.5-10.5), B/D width.

**Price:** \$ \_\_\_\_\_

\*Package Outfit, no substitutions.

†Custom Package, no returns.





**VANILLA BLACKOUT PRO PLUS**

**Vanilla Blackout PRO Plus\***

Combine Vanilla's Brass Knuckle (Blackout) boots with your choice of aluminum-hubbed Backspin wheels.

**Boots:** Vanilla Italian leather Brass Knuckle (Blackout) boots with stitched-leather soles.

**Chassis:** Vanilla Gorilla nylon plates with aluminum trucks.

**Wheels:** Your choice of any Backspin wheels with aluminum hubs.

**Bearings:** ABEC-7.

**Sizes:** Ladies black 4-13 (halves 7.5-10.5), B/D width.

**Price:** \$ \_\_\_\_\_



**VANILLA FREESTYLE PRO**

**Vanilla Freestyle PRO\***

Combine Vanilla's Freestyle boots with your choice of nylon-hubbed Backspin wheels.

**Boots:** Vanilla Italian leather Freestyle boots with stitched-leather soles.

**Chassis:** Vanilla Gorilla nylon plates with aluminum trucks.

**Wheels:** Your choice of any Backspin wheel with nylon hubs.

**Bearings:** ABEC-7.

**Sizes:** Men's black 4-13 (halves 7.5-10.5), D width.

**Price:** \$ \_\_\_\_\_



**VANILLA FREESTYLE PRO PLUS**

**Vanilla Freestyle PRO Plus\***

Combine Vanilla's Freestyle boots with your choice of aluminum-hubbed Backspin wheels.

**Boots:** Vanilla Italian leather Freestyle boots with stitched-leather soles.

**Chassis:** Vanilla Gorilla nylon plates with aluminum trucks.

**Wheels:** Your choice of any Backspin wheels with aluminum hubs.

**Bearings:** ABEC-7.

**Sizes:** Men's black 4-13 (halves 7.5-10.5), D width.

**Price:** \$ \_\_\_\_\_

**Please Note:** Manufacturers often make running product changes throughout the year. Items may not come as pictured.




**VANILLA DIAMOND PRO**
**Vanilla Diamond PRO\***

Combine Vanilla's Diamond boots with your choice of nylon-hubbed Backspin wheels.

**Boots:** Vanilla Italian leather Diamond boots with stitched-leather soles.

**Chassis:** Vanilla Gorilla nylon plates with aluminum trucks.

**Wheels:** Your choice of any Backspin wheels with nylon hubs.

**Bearings:** ABEC-7.

**Sizes:** Men's black w/ red 4-13 (halves 7.5-10.5), D width.

**Price:** \$ \_\_\_\_\_


**VANILLA DIAMOND PRO PLUS**
**Vanilla Diamond PRO Plus\***

Combine Vanilla's Diamond boots with your choice of aluminum-hubbed Backspin wheels.

**Boots:** Vanilla Italian leather Diamond boots with stitched-leather soles.

**Chassis:** Vanilla Gorilla nylon plates with aluminum trucks.

**Wheels:** Your choice of any Backspin wheels with aluminum hubs.

**Bearings:** ABEC-7.

**Sizes:** Men's black w/ red 4-13 (halves 7.5-10.5), D width.

**Price:** \$ \_\_\_\_\_


**REBEL AVENGER FUGITIVE**
**Rebel Avenger Fugitive†**

We've combined Sure-Grip's Derby boot with the also popular Avenger plate.

**Boots:** Sure-Grip leather Rebel boots in Black.

**Chassis:** Sure-Grip's Avenger plates with double-action trucks at a 45 degree angle.

**Wheels:** Sure-Grip 62mm Fugitive wheels. Check available colors and widths on the wheel pages.

**Bearings:** Lynx ABEC-7 racing.

**Sizes:** Men's 3-13.

**Price:** \$ \_\_\_\_\_

**Note:** Avenger plates will come "short-mounted" unless specified when ordering.


**REBEL AVANTI FUGITIVE**
**Rebel Avanti Fugitive†**

The leather Rebel boot is combined with the brand-new Avanti plate from Sure-Grip.

**Boots:** Sure-Grip leather Rebel boots in Black.

**Chassis:** Sure-Grip's all-new Avanti plate with 10 degree, double-action trucks. Plates come in aluminum or white magnesium.

**Wheels:** Sure-Grip 62mm Fugitive wheels. Check for available colors and durometers on the wheels pages.

**Bearings:** Lynx ABEC-7 racing.

**Sizes:** Men's 3-13.

**Price:** \$ \_\_\_\_\_ (with aluminum Avanti plates)

\$ \_\_\_\_\_ (with magnesium Avanti plates)



**SPEED BUGGY****Speed Buggy†**

Everything on this skate is from the great people at Sure-Grip Skate.

**Boots:** Sure-Grip's S-55 boots with leather uppers and stitched soles.

**Chassis:** Rock double-action plates in your choice of 9 colors.

Adjustable toe stops.

**Wheels:** Sure-Grip Zoom 62mm speed wheels in your choice of color.

**Bearings:** Lynx ABEC-7 racing.

**Sizes:** Men's black 4-13.

**Price:** \$ \_\_\_\_\_

**S55 AVANTI FUGITIVE****S55 Avanti Fugitive†**

Great choice for those who are always on the floor.

**Boots:** Sure-Grip's S-55 boots feature leather uppers and stitched soles.

**Chassis:** Sure-Grips' all-new Avanti plate with 10 degree, double-action trucks. Plates come in aluminum or white magnesium.

**Wheels:** Sure-Grip 62mm Fugitive wheels. Check for available colors and durometers on the wheels pages.

**Bearings:** Lynx ABEC-7 racing.

**Sizes:** Men's black 4-12.

**Price:** \$ \_\_\_\_\_ (with aluminum Avanti plates)

\$ \_\_\_\_\_ (with magnesium Avanti plates)

**RAISIN' CAIN****Raisin' Cain†**

Sometimes you just have to raise a little cain.

**Boots:** Sure-Grip's S-75 with leather, stitched soles and Velcro power-strap.

**Chassis:** Rock double-action plates in your choice of 9 colors. Adjustable toe stops.

**Wheels:** Sure-Grip 62mm Fugitive wheels with speed formula. Pick out the color and width you like.

**Bearings:** Lynx ABEC-7 racing.

**Sizes:** Men's black 4-13.

**Price:** \$ \_\_\_\_\_

**S75 AVANTI ROLL-OUT****S75 Avanti Roll-Out†**

Nice set-up for the serious skater.

**Boots:** Sure-Grip's S-75 leather boots with stitched leather soles and Velcro power-straps.

**Chassis:** Sure-Grips's all-new Avanti plate with 10 degree, double-action trucks. Plates come in aluminum or white magnesium.

**Wheels:** Sure-Grip Roll-Out wheels in 59x38mm or 62x38mm. Choice of purple (89A), teal (92A), red (95A), or green (98A).

**Bearings:** Lynx ABEC-7 racing.

**Sizes:** Men's black 4-12.

**Price:** \$ \_\_\_\_\_ (with aluminum Avanti plates)

\$ \_\_\_\_\_ (with magnesium Avanti plates)

**Please Note:**

Manufacturers often make running product changes throughout the year. Items may not come as pictured.

**\*Package Outfit, no substitutions.**

**†Custom Package, no returns.**



**S75 AVANTI ZOMBIE****S75 Avanti Zombie†**

Classic style and performance.

**Boots:** Sure-Grip's S-75 leather boots with stitched leather soles and Velcro power-straps.

**Chassis:** Sure-Grip's all-new Avanti plate with 10 degree, double-action trucks. Plates come in aluminum or white magnesium.

**Wheels:** Sure-Grip Sure-Grip Zombie wheels in your choice of 58mm, 62mm narrow, or 62mm wide in 89A, 92A, 95A, or 98A.

**Bearings:** Lynx ABEC-7 racing.

**Sizes:** Men's black 4-12.

**Price:** \$ \_\_\_\_\_ (with aluminum Avanti plates)  
\$ \_\_\_\_\_ (with magnesium Avanti plates)

**S75 AVENGER DAY OF THE DEAD****S75 Avenger Day of the Dead†**

This stealth skate has been updated with the new D.O.D. wheels from RollerBones.

**Boots:** Sure-Grip's S-75 with leather, stitched soles and Velcro power-strap.

**Chassis:** Sure-Grip's Avenger plates with double-action trucks at a 45 degree angles. Plates come in black aluminum or white magnesium (Magnesium is an additional \$50).

**Wheels:** RollerBones all-new Day of the Dead speed wheels in your choice of 80A, 86A, 92A, 94A, or 96A.

**Bearings:** Qube 8-Ball.

**Sizes:** Men's black 4-13.

**Price:** \$ \_\_\_\_\_ / \$ \_\_\_\_\_ (white Magnesium plate)

**Note:** Avenger plates will come "short-mounted" unless specified when ordering.

**CHAMPION LAX****Champion LAX†**

The Champion LAX has a great old-school feel.

**Boots:** Sure-Grip's S-75 leather, stitched soled boots with Velcro power-strap.

**Chassis:** Laser speed plates. Available in single or double-action, with or without toe stops (Elite version does not accommodate toe stops).

**Wheels:** Hyper Shaman 62mm speed wheels.

**Bearings:** Bones REDS 7mm.

**Sizes:** Men's black 4-13.

**Price:** \$ \_\_\_\_\_

**DICE****Dice†**

Great boot at a nice price.

**Boots:** Sure-Grip's S-85 leather, stitched soled boots with lace-cover.

**Chassis:** Rock double-action plates in your choice of 9 colors.

Adjustable toe stops.

**Wheels:** Clawz 62mm wheels in your choice of 9 different colors.

**Bearings:** Lynx ABEC-7 race.

**Sizes:** Men's black 4-13.

**Price:** \$ \_\_\_\_\_

\*Package Outfit, no substitutions.

† Custom Package, no returns.

**Please Note:**

Manufacturers often make running product changes throughout the year. Items may not come as pictured.



**S-85 AVANTI POWER PLUS****S-85 Avanti Power Plus†**

Classic look with modern performance.

**Boots:** Sure-Grip's S-85 leather, stitched soled boots with lace covers.

**Chassis:** Sure-Grip's all-new Avanti plate with 10 degree, double-action trucks. Plates come in aluminum or white magnesium.

**Wheels:** Sure-Grip 62mm Power Plus.

**Bearings:** Lynx ABEC-7 racing.

**Sizes:** Men's black 4-13.

**Price:** \$ \_\_\_\_\_ (with aluminum Avanti plates)  
\$ \_\_\_\_\_ (with magnesium Avanti plates)

**MENTOR****Mentor†**

This is the skate that others try to follow.

**Boots:** Sure-Grip's S-85 leather, stitched soled boots with lace-cover.

**Chassis:** PowerTrac lightweight aluminum speed plates with micro-adjustable aluminum trucks.

**Wheels:** Hyper Shaman 62mm speed wheels.

**Bearings:** Qube Gold Swiss.

**Sizes:** Men's black 4-13.

**Price:** \$ \_\_\_\_\_

**ISIS AVENGER ZOMBIE****Isis Avenger Zombie†**

Sure-Grip has gotten serious about their Derby skates with this new set-up.

**Boots:** The all-new Isis boot featuring leather upper, stitched soles, and Velcro power-straps.

**Chassis:** Sure-Grip's Avenger plates with double-action trucks at a 45 degree angles. Plates come in black aluminum or white magnesium (Magnesium is an additional \$50).

**Wheels:** All-new Sure-Grip Zombie wheels in your choice of 59mm, 62mm narrow, or 62mm wide in 89A, 92A, 95A or 98A.

**Bearings:** Lynx ABEC-7 racing.

**Sizes:** Women's grey 5-10.

**Price:** \$ \_\_\_\_\_ (Black Avenger) /  
\$ \_\_\_\_\_ (White Magnesium Avenger)

**Note:** Avenger plates will come "short-mounted" unless specified when ordering.

**ISIS AVANTI ROLL-OUT****Isis Avanti Roll-Out†**

Sure-Grip shows why they are now considered a leader in the Derby world.

**Boots:** Sure-Grip's Isis boot featuring leather uppers, stitched soles, and Velcro power-straps.

**Chassis:** Sure-Grip's all-new Avanti plate with 10 degree, double-action trucks. Plates come in aluminum or white magnesium.

**Wheels:** Sure-Grip Roll-Out wheels in 59x38mm or 62x38mm. Choice of purple (89A), teal (92A), red (95A), or green (98A).

**Bearings:** Lynx ABEC-7 racing.

**Sizes:** Women's grey 5-10.

**Price:** \$ \_\_\_\_\_ (with aluminum Avanti plates)  
\$ \_\_\_\_\_ (with magnesium Avanti plates)



SKATING  
IS IN  
OUR  
FAMILY  
DNA



**STOMP 1**

**STOMP 2**

**STOMP 5**

**RollerDerby**  
elite  
[www.rollerderby.com](http://www.rollerderby.com)





Denis Mejia for VNLA





**CHICAGO KID'S RINK SKATE****Chicago Kid's Rink Skate (1900/1905)\***

This child's skate is for those who want a more traditional look.

**Boots:** Chicago Tigerlon boots.

**Chassis:** Chicago plates with adjustable trucks.

**Wheels:** Chicago 52mm urethane wheels.

**Bearings:** Semi-precision.

**Sizes:** Boy's black (1905) 10J-4; girl's white (1900) 10J-4.

**Price:** \$ \_\_\_\_\_

**CHICAGO 400/405****Chicago 400/405\***

This is a good entry-level skate for both children and adults.

**Boots:** Chicago synthetic boots.

**Chassis:** Chicago deluxe aluminum plates with double-action trucks and jump-bars.

**Wheels:** Chicago urethane rink wheels.

**Bearings:** Precision.

**Sizes:** Men's black (405) 1-13; ladies white (400) 1-11.

**Price:** \$ \_\_\_\_\_

**DOMINION ESPRIT****Dominion Esprit (D278)\*  
Limited Availability**

Traditional skate with a more professional fit.

**Boots:** Dominion synthetic boots.

**Chassis:** Dominion Marathon plates with fixed toe stops.

**Wheels:** Dominion urethane wheels.

**Bearings:** Long-life.

**Sizes:** Boy's/men's black 8J-13; girl's/ladies white 9J-11.

**Price:** \$ \_\_\_\_\_

(Limited availability)

**CHICAGO 800/805****Chicago 800/805\***

Chicago's top-of-the-line skate.

**Boots:** Leather-lined Chicago boots:

**Chassis:** Polished aluminum plates with jump-bars and adjustable toe stops.

**Wheels:** 58mm urethane wheels.

**Bearings:** ABEC-3.

**Sizes:** Men's black (805) 5-13; ladies white (800) 5-12.

**Price:** \$ \_\_\_\_\_

\*Package Outfit, no substitutions.

†Custom Package, no returns.

**Please Note:**

Manufacturers often make running product changes throughout the year. Items may not come as pictured.



**Fame\***

Sure-Grip's Fame skate has a true classic style.

**Boots:** Sure-Grip's #37 high-top art boots.

**Chassis:** Rock plates with double-action trucks and adjustable toe stops. Juvenile sizes come with aluminum plates.

**Wheels:** Sure-Grip Fame 57mm artistic wheels.

**Bearings:** Sure-Grip ABEC-3.

**Sizes:** Men's black 12J-14; ladies white 12J-11.

**Price:** \$ \_\_\_\_\_

**FAME****THE PACESETTER****The Pacesetter (P385/P985)†**

This skate has remained one of our most popular artistic-style skates.

**Boots:** High-top leather-lined boots.

**Chassis:** Dominion aluminum Marathon plates with double-action trucks.

**Wheels:** Pacesetter 57mm urethane wheels in clear pink, clear red, clear blue, black, or natural.

**Bearings:** ABEC-1 Chrome.

**Sizes:** Men's black (P385) 2-13; ladies white (P985) 3-10.

**Price:** \$ \_\_\_\_\_

**SURE-GRIP BOARDWALK FAME****CANDI GIRL****Sure-Grip Boardwalk Fame†**

Don't sacrifice style for performance. The Boardwalk now is available with indoor Fame wheels.

**Boots:** Sure-Grip's suede leather boots in pink, purple, red, or teal.

**Chassis:** Rock double-action plates with adjustable toe stops.

**Wheels:** Sure-Grip's Fame wheels in new translucent colors. 57mm in 98A.

**Bearings:** Sure-Grip ABEC-3 bearings.

**Sizes:** Men's 4-10.

**Price:** \$ \_\_\_\_\_

**Candi Girl\***

This is all-new recreational skate from Roller Derby.

**Boots:** Split-suede leather uppers in four color choices.

**Chassis:** Aluminum plates with double-action trucks and fixed toe stops.

**Wheels:** 66mm poured urethane wheels in 82A.

**Bearings:** ABEC-5 Carbon bearings.

**Sizes:** 3-11

**Price:** \$ \_\_\_\_\_





### THE SUPER-DUPER PACESETTER

#### The Super-Duper Pacesetter†

A souped-up version of the Pacesetter.

**Boots:** High-top leather-lined boots.

**Chassis:** Sure-Grip Super-X aluminum plates with double-action trucks.

**Wheels:** Pacesetter 57mm urethane wheels in clear pink, clear red, clear blue, black, or natural.

**Bearings:** Lynx ABEC-7.

**Sizes:** Men's black 2-13; ladies white 3-10.

**Price:** \$ \_\_\_\_\_



### #37 AVANTI FAME

#### #37 Avanti Fame †

This is an all-new outfit featuring Sure-Grip's new Avanti plate. **Boots:** Sure-Grip Fame #37 boot with soft-rolled collar and comfort-padded lining.

**Chassis:** Sure-Grip's all-new Avanti plate with 10 degree, double-action trucks. Plates come in aluminum or white magnesium.

**Wheels:** Sure-Grip's Fame wheels in 57mm.

**Bearings:** Lynx ABEC-7.

**Sizes:** Men's black 4-13; ladies white 4-11.

**Price:** \$ \_\_\_\_\_ (with aluminum Avanti plates)

\$ \_\_\_\_\_ (with magnesium Avanti plates)



### #1300 AVANTI FO-MAC FREESTYLE

#### #1300 Avanti Fo-Mac Freestyle†

There is no need to have skates that look just like everybody else's.

**Boots:** Sure-Grip #1300 suede, tan boots.

**Chassis:** Sure-Grip's all-new Avanti plate with 10 degree, double-action trucks. Plates come in aluminum or white magnesium.

**Wheels:** FoMac Freestyle wheels in classic black.

**Bearings:** Lynx ABEC-7 bearings.

**Sizes:** Men's tan 3-13.

**Price:** \$ \_\_\_\_\_ (with aluminum Avanti plates)

\$ \_\_\_\_\_ (with magnesium Avanti plates)



### THE AMERICAN

#### The American†

Whether you're an art skater, or someone who enjoys skating with their friends, the American is the skate for you.

**Boots:** Sure-Grip #73 leather, artistic boots.

**Chassis:** Sure-Grip Competitor plates with double-action trucks, jump bars, and adjustable toe stops.

**Wheels:** All-American Plus artistic wheels.

**Bearings:** Lynx ABEC-7.

**Sizes:** Men's black 4-13; ladies white 4-10.

**Price:** \$ \_\_\_\_\_



**The Slider†**

The Slider is for skaters who don't want a skate with too much grip.

**Boots:** Sure-Grip #73 leather, artistic boots.

**Chassis:** Sure-Grip Competitor plates with double-action trucks, jump bars, and adjustable toe stops.

**Wheels:** Fo-Mac Premier in Red, Black, or Brown.

**Bearings:** Lynx ABEC-7.

**Sizes:** Men's black 4-13; ladies white 4-10.

**Price:** \$ \_\_\_\_\_

**THE SLIDER****#73 AVANTI ALUMINUM FAME****#73 Avanti Aluminum Fame †**

Great skate for those late-night adult skates.

**Boots:** Sure-Grip #73 leather art boots.

**Chassis:** Sure-Grip's all-new Avanti plate with 10 degree, double-action trucks. Plates come in aluminum or white magnesium.

**Wheels:** Sure-Grip's Fame wheels in 57mm.

**Bearings:** Lynx ABEC-7.

**Sizes:** Men's black 4-13; ladies white 4-11.

**Price:** \$ \_\_\_\_\_ (with aluminum Avanti plates)

\$ \_\_\_\_\_ (with magnesium Avanti plates)

**#93 AVANTI MAGNESIUM FAME****#93 Avanti Magnesium Fame †**

Great for those late-night skate marathons.

**Boots:** Sure-Grip #93 leather art boots

**Chassis:** Sure-Grip's all-new Avanti plate with 10 degree, double-action trucks. Plates come in aluminum or white magnesium.

**Wheels:** Sure-Grip's Fame wheels in 57mm.

**Bearings:** Lynx ABEC-7.

**Sizes:** Men's black 4-13; ladies white 4-11.

**Price:** \$ \_\_\_\_\_ (with aluminum Avanti plates)

\$ \_\_\_\_\_ (with magnesium Avanti plates)

**FLO'S BLUE PLATE SPECIAL****Flo's Blue Plate Special†**

Flo's been serving up this fine skate for years.

**Boots:** Sure-Grip #73 leather, artistic boots.

**Chassis:** Sure-Grip Century plates with double-action trucks and adjustable toe stops.

**Wheels:** RollerBones Team wheels in 57mm or 62mm.

**Bearings:** Lynx ABEC-7.

**Sizes:** Men's black 4-13; ladies white 4-11.

**Price:** \$ \_\_\_\_\_

**THE BETTY****The Betty†**

A true competitive skate.

**Boots:** Sure-Grip #73 leather, artistic boots.

**Chassis:** Sure-Grip Classic plates with double-action trucks with adjustable pivot and adjustable toe stops.

**Wheels:** RollerBones Team wheels in 57mm or 62mm.

**Bearings:** RollerBones REDS

**Sizes:** Men's black 4-13;

ladies white 4-11.

**Price:** \$ \_\_\_\_\_

**Please Note:**

Manufacturers often make running product changes throughout the year. Items may not come as pictured.

\*Package Outfit, no substitutions.

†Custom Package, no returns.





V  
N  
I  
A

Diamond Walker for VNI A





**CHICAGO SIDEWALK SKATE**

**Chicago Sidewalk Skate (100/105)\***

This skate can be used in the rink or on the sidewalk. It will help a child gain confidence skating on their own skates.

**Boots:** Chicago boots with padded ankle collar and Velcro strap.

**Chassis:** Chicago plates with adjustable trucks.

**Wheels:** Chicago wheels.

**Bearings:** Semi-precision.

**Sizes:** Boy's black 12J-5; girl's white 12J-5.

**Price:** \$ \_\_\_\_\_



**CHICAGO ADJUSTABLE**

**Chicago Adjustable Quad (210/215) \***

This is an all-new adjustable skate from Chicago.

**Boots:** Adjustable shell with breathable mesh liners and adjustable micro-ratchet buckles.

**Chassis:** Easy push-button adjustable plates.

**Wheels:** Chicago all-purpose wheels.

**Bearings:** 608Z Semi Precision.

**Sizes:** Boys blue/silver/black small (10J-13J), medium (1-4); girls purple/silver/white small (10J-13J), medium (1-4).

**Price:** \$ \_\_\_\_\_



**PACER ZTX**

**Pacer ZTX (P361/P961)\***

Pacer's all-purpose kid's skate can be used indoors or out.

**Boots:** Pacer children's boot with ankle support straps.

**Chassis:** Pacer plastic plates.

**Wheels:** Pacer urethane wheels.

**Bearings:** Sealed.

**Sizes:** Boy's black 12J-5; girl's white 12J-5.

**Price:** \$ \_\_\_\_\_



**PACER XT-70**

**Pacer XT-70 (P960)\***

This adjustable skate from Pacer can be used indoors or out, and it is great for growing children.

**Boots:** Adjustable shells with removable comfort liners.

**Chassis:** Plastic, adjustable plates.

**Wheels:** Polyurethane injected wheels.

**Bearings:** Long Life

**Sizes:** Adjustable 12J-6. Call for sizing details.

**Prices:** \$ \_\_\_\_\_

**Please Note:**

Manufacturers often make running product changes throughout the year. Items may not come as pictured.



**ASPHALT JUNKIE****Asphalt Junkie†**

Hit the sidewalk and enjoy the fresh air in this affordable, outdoor model.

**Boots:** Chicago's model 400/405 synthetic high-top boots.

**Chassis:** Chicago aluminum plates with double-action trucks and jump bars.

**Wheels:** Roadrider outdoor wheels in your choice of 7 colors.

**Bearings:** ABEC-1.

**Sizes:** Men's black 1-13; women's white 1-11.

**Price:** \$ \_\_\_\_\_

**GT-50 OUTDOOR****GT-50 Outdoor†**

We've taken one of the most popular rink skates, and we've sent it outside to play.

**Boots:** Rock GT-50 boots in either black, white, or grey.

**Chassis:** Rock double-action plates with adjustable toe stops.

**Wheels:** Your choice of Atom Pulse wheels in blue, green, pink, purple, or smoke.

**Bearings:** Lynx ABEC-7 racing.

**Sizes:** Men's black 1-15; men's white 1-10.

**Price:** \$ \_\_\_\_\_ (sizes 14 & 15 / \$ \_\_\_\_\_)

**U-3 PULSE OUTDOOR****U-3 Pulse Outdoor†**

Take some style out to the streets.

**Boots:** Stylish Satinene boots with comfort padding and hidden lace system.

**Chassis:** RTX6000 frame with adjustable toe stops.

**Wheels:** Your choice of Atom Pulse wheels in blue, green, pink, purple, or smoke.

**Bearings:** Lynx ABEC-7 racing.

**Sizes:** Men's black 4-13; men's red 4-13; and men's blue 4-13.

**Price:** \$ \_\_\_\_\_

**REBEL OUTDOOR****Rebel Outdoor†**

Take your rebellious side outside to the masses.

**Boots:** Sure-Grip leather boots with elastic tongue stays, ankle protection, and box-toe comfort-fit.

**Chassis:** Sure-Grip Probe plates with reverse kingpins and adjustable toe stops.

**Wheels:** Atom Road Hog 66mm outdoor speed wheels.

**Bearings:** Lynx ABEC-7 racing.

**Sizes:** Men's black 3-12; men's white 4-11.

**Price:** \$ \_\_\_\_\_

\*Package Outfit, no substitutions.

†Custom Package, no returns.





### BOARDWALK COLORS

#### Boardwalk Colors †

Sure-Grip's standard for the outdoor skater. Pure SoCal.

**Boots:** Sure-Grip's suede leather boots in pink, purple, red, or teal.

**Chassis:** Rock double-action plates with adjustable toe stops.

**Wheels:** Sure-Grip's Boardwalk outdoor 78A wheels in blue, pink, purple, or red.

**Bearings:** Sure-Grip ABEC-3 bearings.

**Sizes:** Men's 4-10.

**Price:** \$ \_\_\_\_\_



### 1300 SUPER-X MOTION

#### 1300 Super-X Motion†

Get a little West Coast old school with the Boardwalk.

**Boots:** Sure Grip #1300 tan, suede outdoor boots.

**Chassis:** Sure-Grip Super-X plates with double-action trucks.

**Wheels:** Sure-Grip Motion 62mm outdoor wheels.

**Bearings:** Sure-Grip ABEC-5.

**Sizes:** Men's tan 3-14.

**Price:** \$ \_\_\_\_\_



### BREATH OF FRESH AIR

#### Breath of Fresh Air†

A true outdoor skate for the recreational skater.

**Boots:** Leather-lined high-top boots.

**Chassis:** Sure-Grip Super-X plates with double-action trucks.

**Wheels:** Roadrider outdoor wheels in your choice of 7 colors.

**Bearings:** Lynx ABEC-7 racing.

**Sizes:** Men's black 1-13; ladies white 1-10.

**Price:** \$ \_\_\_\_\_

### SAILIN' AWAY



#### Sailin' Away†

Built for the avid outdoor skater.

**Boots:** Sure-Grip #73 leather, artistic boots.

**Chassis:** Sure-Grip Competitor plates with double-action trucks and adjustable toe stops.

**Wheels:** Your choice of Atom Pulse wheels in blue, green, pink, purple, or smoke.

**Bearings:** Lynx ABEC-7 racing.

**Sizes:** Men's black 4-13; ladies white 4-11.

**Price:** \$ \_\_\_\_\_

#### Please Note:

Manufacturers often make running product changes throughout the year. Items may not come as pictured.





# FAME

*Avanti*



[www.suregrip.com](http://www.suregrip.com)



*Candi<sup>®</sup>  
grl*™



*personality in color*



**Roller Derby.**  
elite



**CLAWZ****GT-50****SHAMAN****Zoom****FUGITIVE****ROLL-OUT****Clawz**

Now comes in 9 greatly improved colors!

**Size / Hardness:** 62mm x 95A

**Colors:** Pink, Yellow, Green, Royal Blue, Red, Purple, Light Blue, Orange, and Black.

**Price:** \$\_\_\_\_\_ **set of 8**

**GT-50**

Speed replacement wheel with a twist.

**Size:** 62mm.

**Color:** Black & White swirl.

**Price: w/ ABEC-5 bearings:** \$\_\_\_\_\_ **set of 8**

**Shaman**

This wheel traces its roots back to the Wicked Lips. Even has the same smell.

**Size:** 62mm

**Color / Hardness:**

Green (Soft 93A), Red (Firm 95A), Natural (Race 97A), Blue (Hybrid).

**Price:** \$\_\_\_\_\_ **set of 8**

**Zoom**

Sure-Grip's replacement speed wheel in a multitude of colors.

**Size / Hardness:** 62mm x 96A

**Color:** Blue, Pink, Green, Black, Yellow, Orange, Red, Purple, Sky Blue, and White.

**Price:** \$\_\_\_\_\_ **set of 8**

**Fugitive**

Sure-Grip's performance-urethane with a nylon core.

**Size:** 62mm Grip

**Color:** Red (grip), Blue (grip), Pink (grip), Green (grip), Black (grip), and Grey (super-grip push wheel).

**Price:** \$\_\_\_\_\_ **set of 8**

**Roll-Out**

Sure-Grip's new derby/speed wheels.

**Size:** 59mm or 62mm (38mm wide)

**Color / Hardness:** Steam Purple (89A), Pack Teal (92A), Jammer Red (95A), Dragon Green (98A).

**Price:** \$\_\_\_\_\_ **set of 8**

**Please Note:**

Manufacturers often make running product changes throughout the year. Items may not come as pictured.



**SWEET 'N' LOW****EQUALIZER****SUGAR****ZOMBIE****50 / 50****TWISTER****POWER PLUS****Sweet 'n' Low**

Low-profile wheel from Sure-Grip.

**Size / Hardness:** 58mm x 38mm Hybrid Grip

**Color:** Pink.

**Price:** \$ \_\_\_\_\_ set of 8

**Equalizer**

Hybrid wheel from Sure-Grip.

**Size / Hardness:** 62mm x 38mm Hybrid Grip.

**Color:** Blue.

**Price:** \$ \_\_\_\_\_ set of 8

**Sugar**

Sure-Grip's popular grippy derby wheel.

**Size / Hardness:** 62mm x 44mm Hybrid Grip.

**Color:** White.

**Price:** \$ \_\_\_\_\_ set of 8

**Zombie**

Sure-Grip's top-of-the-line derby wheel with aluminum hubs.

**Sizes:** 58mm x 36mm, 62mm x 36mm, and 62mm x 43mm.

**Hub color / Hardness:** Purple (89A), Black (92A), Green (98A) and Red (95A)

**Price:** \$ \_\_\_\_\_ set of 8

**50/50**

This dual pour wheel from Sure-Grip is sure to catch your eye

**Size / Hardness:** 62mm x 96A

**Color:** Orange/Blue, Black/White, Yellow/Purple, Green/Purple, Pink/Black, Red/White, Red/Black and Pink/White.

**Price:** \$ \_\_\_\_\_ set of 8

**Twister**

The most popular swirl wheel ever.

**Size / Hardness:** 62mm x 96A

**Color:** Red/Black, Red, Red/Yellow, Yellow, Green, Blue, Purple, Pink, and Black.

**Price:** \$ \_\_\_\_\_ set of 8

**Power Plus**

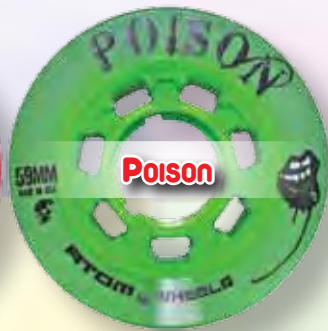
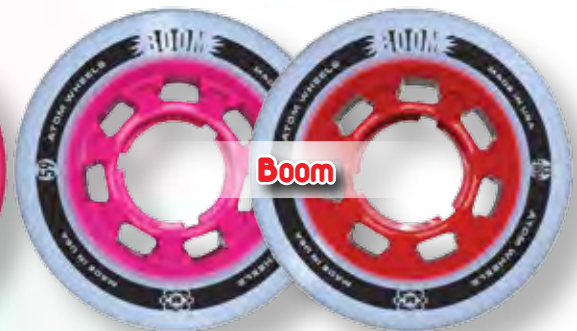
Sure-Grip's performance urethane with Matrix SLB aluminum hubs.

**Size / Hardness:** 62mm Grip.

**Colors:** Red, Pink, Yellow, Purple, Green, and Black.

**Price:** \$ \_\_\_\_\_ set of 8



**Snap****Poison****SUPER-G****Boom****JUKE HP****JUKE ALLOY HP****STROKER****LOWBOY****DNA HP****G-ROD HP****G-ROD ALLOY HP****Atom Snap**

Same Formula as Poison.

**Size:** 62x44mm

**Hardness:** 91A

**Color:** Blue, Black, Green, Pink, Yellow

**Price:** \$\_\_\_\_\_ set of 8

**Atom Poison**

Good for indoor or outdoor.

**Size:** 59mm, 62x38mm, & 62x44mm

**Hardness:** Hybrid

**Color:** Ghost Green

**Price:** \$\_\_\_\_\_ set of 8

**Atom Super-G**

Great for any surface.

**Size:** 59x38mm

**Hardness/Color:** Pink w/ Blue (88A), Pink w/ Yell (95A)

**Price:** \$\_\_\_\_\_ set of 8

**Atom Boom**

"Go to" wheels for all surfaces.

**Size:** 59x38mm, 62x44mm

**Hardness/Color:** Wht w/ Pink (Firm), Wht w/ Orange (X-Firm)

**Price:** **Narrow** (\$\_\_\_\_\_ set of 8),  
**Wide** (\$\_\_\_\_\_ set of 8)

**Atom Juke HP**

New High-Performance Jukes

**Size:** 59x38mm

**Hardness:** 88A, 91A, 93A, 95A

**Color:** Atom Green

**Price:** \$\_\_\_\_\_ set of 8

**Atom Juke Alloy HP**

New High-Performance Jukes

**Size:** 59x38mm

**Hardness:** 88A, 91A, 93A, 95A

**Color:** Atom Green

**Price:** \$\_\_\_\_\_ set of 8

**Atom Stroker**

**Size:** 59x38mm, 62x44mm

**Hardness:** 97A

**Color:** Yellow

**Price:** \$\_\_\_\_\_ set of 8

**Atom Lowboy**

**Size:** 59x38mm, 62x44mm

**Hardness:** 95A

**Color:** Blue

**Price:** \$\_\_\_\_\_ set of 8

**Atom DNA HP**

All-new Hi-Performance wheel

**Size:** 59x38mm, 62x44mm

**Hardness:** Grip

**Color:** Black

**Price:** \$\_\_\_\_\_ set of 8

**Atom G-Rod HP**

Great for most indoor surfaces.

**Size:** 59x38mm, 62x44mm

**Hardness:** 93A

**Color:** Red

**Price:** **Narrow** (\$\_\_\_\_\_ set of 8),  
**Wide** (\$\_\_\_\_\_ set of 8)

**Atom G-Rod Alloy HP**

Alloy Hollow-cap technology.

**Size:** 59x38mm, 62x44mm

**Hardness:** 93A

**Color:** Red

**Price:** \$\_\_\_\_\_ set of 8

**Please Note:**

Manufacturers often make running product changes throughout the year. Items may not come as pictured.



**RollerBones Day of the Dead****RollerBones Turbo****BACKSPIN TRACKSTAR****BACKSPIN SCRIBBLE****BACKSPIN BLUEPRINT****BACKSPIN ROCKSTAR****BACKSPIN REVENGE****BACKSPIN REMIX LITE****BACKSPIN REMIX****BACKSPIN DELUXE****BACKSPIN PHENOM****BACKSPIN MAYHEM****BACKSPIN SYNERGY****BACKSPIN TUXEDO****BEASTMODE****RollerBones Day of the Dead**

RollerBones Nylon-hubbed derby wheels.

**Size:** 62mm**Hardness:** 80A, 86A, 92A, 94A, 96A**Price:** \$ \_\_\_\_\_ set of 8**RollerBones Turbo**

RollerBones aluminum-hubbed derby/speed wheels.

**Size:** 62mm**Color / Hardness:** White (80A, 85A, 88A, 92A, 95A, 97A, 101A), Yellow (85A, 88A), Green (88A, 92A, 95A, 97A), Black (92A, 95A, 97A, 101A)**Price:** \$ \_\_\_\_\_ set of 8**Backspin TrackStar**

Vanilla Backspin wheel with x-grip.

**Size / Hardness:** 62mm x 89A**Color:** Orange**Price:** \$ \_\_\_\_\_ set of 8**Backspin Scribble**

Vanilla Backspin wheel offers traction.

**Size / Hardness:** 62mm x 91A**Color:** Green**Price:** \$ \_\_\_\_\_ set of 8**Backspin Blueprint**

Leave your mark with the Blueprint.

**Size / Hardness:** 62mm x 92A**Color:** Blue**Price:** \$ \_\_\_\_\_ set of 8**Backspin Rockstar**

You won't spin-out with Backspins.

**Size / Hardness:** 62mm x 92A**Color:** Pink**Price:** \$ \_\_\_\_\_ set of 8**Backspin Revenge**

Slim derby wheel.

**Size:** 62mm**Hardness:** 90A (Red), 95A (Black, not pictured)**Price:** \$ \_\_\_\_\_ set of 8**Backspin Remix Lite**

Same wheel as the Remix, but with a plastic hub.

**Size / Hardness:** 62mm x 93A**Color:** Black & White**Price:** \$ \_\_\_\_\_ set of 8**Backspin Remix**

Made by Vanilla with an aluminum hub.

**Size / Hardness:** 62mm x 93A**Color:** Black & White**Price:** \$ \_\_\_\_\_ set of 8**Backspin Deluxe**

Speed/Jam wheel with aluminum hub from Vanilla.

**Size / Hardness:** 62mm x 95A**Color:** Red or Blue**Price:** \$ \_\_\_\_\_ set of 8**Backspin Phenom**

Hi-performance Derby wheel.

**Size:** 59mm x 38mm**Color:** Black with aluminum hub.**Hardness:** 88A**Price:** \$ \_\_\_\_\_ set of 8**Backspin Mayhem**

Hi-performance Derby wheel.

**Size:** 59mm x 38mm**Color:** Purple with aluminum hub.**Hardness:** 93A**Price:** \$ \_\_\_\_\_ set of 8**Backspin Synergy**

Hi-performance Derby wheel.

**Size:** 59mm x 38mm**Color:** Yellow with aluminum hub.**Hardness:** 97A**Price:** \$ \_\_\_\_\_ set of 8**Backspin Tuxedo**

Speed wheel that comes on the Tuxedo Jr.

**Size / Hardness:** 62mm x 93A**Color:** Black**Price:** \$ \_\_\_\_\_ set of 8**BeastMode**

Derby/speed wheel.

**Size / Hardness:** 59mm x 38mm**Color:** Purple 93A, Blue 96A**Price:** \$ \_\_\_\_\_ set of 8





### Fireflys

Light-up wheels come with ABEC-3 bearings.  
**Size:** 58mm and 62mm  
**Colors:** Clear with red, green, and orange LED.  
**Price:** \$ \_\_\_\_\_ set of 8

### Pacesetter

Great all-around recreational wheel.  
**Size / Hardness:** 57mm x 97A  
**Colors:** Blue, Pink, Red, White and Black.  
**Price:** \$ \_\_\_\_\_ set of 8

### Fame

Recreational wheel from Sure-Grip.  
**Size / Hardness:** 57mm x 97A  
**Colors:** Black, White, Blue, Pink, and Purple.  
**Price:** \$ \_\_\_\_\_ set of 8

### Fame Clear

New clear colors now available in the Fame.  
**Size / Hardness:** 57mm x 97A  
**Colors:** Clear Pink, Purple, Red, and Teal.  
**Price:** \$ \_\_\_\_\_ set of 8

### All-American Plus Urethane

Very popular, good rolling recreational wheel.  
**Size / Hardness:** 57mm x 99A  
**Colors:** White  
**Price:** \$ \_\_\_\_\_ set of 8

### Sure-Grip Velvet

The original Velvet.  
**Size:** 57mm  
**Hardness:** Very firm  
**Colors:** Black & White  
**Price:** \$ \_\_\_\_\_ set of 8

### Sure-Grip All-American Dream

Hard wheel with an aluminum hub.  
**Size / Hardness:** 57mm / Very firm.  
**Colors:** White or Black  
**Price:** \$ \_\_\_\_\_ set of 8

### Sure-Grip All American Plus (Old-School)

Old-school vanathane AA+  
**Size / Hardness:** 57mm x very hard.  
**Colors:** Black or White.  
**Price:** \$ \_\_\_\_\_ set of 8

### Sure-Grip Wood

First made around 1938. True old-school.  
**Size:** 50mm  
**Color:** It's wood.  
**Hardness:** Wood is hard.  
**Price:** \$ \_\_\_\_\_ set of 8

### Sure-Grip Phenolic

The original phenolic wheel that put Sure-Grip on the map.  
**Size:** 47mm  
**Color:** Natural  
**Hardness:** Very  
**Price:** \$ \_\_\_\_\_ set of 8

### Fo-Mac Mini Mac

Mini version of the Fo-Mac Premier.  
**Size / Hardness:** 46mm Very Firm  
**Color:** Brown  
**Price:** \$ \_\_\_\_\_ set of 8

### Fo-Mac Free-Style

Get old school with Free-Style.  
**Size / Hardness:** 57mm Firm  
**Colors:** Black.  
**Price:** \$ \_\_\_\_\_ set of 8

### Fo-Mac Premier

A true old school classic.  
**Size / Hardness:** 57mm Very Firm  
**Colors:** Brown, Black, and Red  
**Price:** \$ \_\_\_\_\_ set of 8



**SURE-GRIP ROYAL****ROLLERBONES TEAM****ROLLERBONES ELITE****ROADRIDER****SURE-GRIP AEROBIC****SURE-GRIP BOARDWALK****ATOM PULSE****ATOM ROAD HOG****Sure-Grip Royal**

All-new wheel for the serious skater.

**Size / Hardness:** 57mm or 63mm in 101A

**Color:** Whiskey clear

**Price:** 57mm \$ \_\_\_\_\_ set of 8

63mm \$ \_\_\_\_\_ set of 8

**RollerBones Team**

New look for the popular RollerBones wheel.

**Sizes:** 57mm and 62mm

**Hardness:** 98A and 101A

**Colors:** White, Pink, Black, Blue, and Green

**Price:** 57mm \$ \_\_\_\_\_ set of 8

62mm \$ \_\_\_\_\_ set of 8

**RollerBones Elite**

For the serious art skater.

**Sizes:** 57mm and 62mm

**Hardness:** 101A and 103A

**Colors:** Natural, Black, and Clear.

**Price:** 57mm \$ \_\_\_\_\_ set of 8

62mm \$ \_\_\_\_\_ set of 8

**RoadRider**

Great all-around outdoor wheel with bearing insert.

**Size / Hardness:** 61mm x 78A

**Colors:** Black, Blue, Green, Pink Purple, Yellow and Red.

**Price:** \$ \_\_\_\_\_ set of 8

**Sure-Grip Aerobic**

The classic outdoor wheel.

**Size / Hardness:** 62mm and 85A.

**Color:** Black, Green, Purple, Orange, Red, Yellow, Pink, and Blue.

**Price:** \$ \_\_\_\_\_ set of 8

**Sure-Grip Boardwalk**

All-new outdoor wheel from Sure-Grip.

**Size / Hardness:** 65mm x 78A.

**Color:** Pink, Black, Teal, Red, Purple, and Clear.

**Price:** \$ \_\_\_\_\_ set of 8

**Atom Pulse**

Atom's Pulse wheel is great for cruising on side-walks and trails.

**Size / Hardness:** 65mm x 78A

**Color:** Clear Blue, Clear Green, Clear Pink, Clear Purple and Smoke

**Price:** \$ \_\_\_\_\_ set of 8

**Atom Road Hog**

Atom outdoor wheels with speed in mind.

**Size / Hardness:** 66mm x 78A

**Color:** Yellow

**Price:** \$ \_\_\_\_\_ set of 8

**Please Note:**

Manufacturers often make running product changes throughout the year. Items may not come as pictured.





## *Royal Wheel*

Royal competition wheels are made in the USA with state of the art urethanes to give you the perfect roll and a quick response.

101A hardness and available in a 57mm or 63mm diameter

*[www.suregrip.com](http://www.suregrip.com)*





VN  
LA

Denis Mejia for VNLA



**Labeda Voodoo U-3**

All-new boots with Satinene finish, comfort padding, and hidden lace system.

**Sizes:** Men's black, blue, and red 4-13.

**Price:** \$ \_\_\_\_\_ pair

**Labeda Voodoo U-7**

Full-grain leather boots with leather, stitched soles.

**Sizes:** Men's black, green and white 4-13 (halves 5.5 to 10.5)

**Price:** \$ \_\_\_\_\_ pair

**Stomp Factor I**

**Sizes:** Men's black, green, or red 4-12.

**Price:** \$ \_\_\_\_\_ pair

**Stomp Factor II**

**Sizes:** Men's black 4-12.

**Price:** \$ \_\_\_\_\_ pair

**GT-50**

You can now purchase the Rock GT-50 boot.

**Sizes:** Men's black 1-15; men's white 1-10.

**Price:** \$ \_\_\_\_\_ pair

\$ \_\_\_\_\_ pair (Sz. 14 & 15).

**Sure-Grip Rebel**

This leather boot from Sure-Grip is available in eight colors:

**Sizes:** Men's black 1-14, men's white or pink 1-11, all other colors 1-13.

**Price:** \$ \_\_\_\_\_ pair

**Sure-Grip S-55**

All-new leather speed boots with stitched sole.

**Sizes:** men's black 4-14.

**Price:** \$ \_\_\_\_\_ pair

**Sure-Grip S-75**

Leather speed boots with power strap and stitched soles.

**Sizes:** Men's black 4-13

**Price:** \$ \_\_\_\_\_ pair

**Sure-Grip S-85**

Leather speed boots with lace covers and stitched soles.

**Sizes:** Men's black 5-13

**Price:** \$ \_\_\_\_\_ pair

**Sure-Grip Isis**

The all-new Isis boot featuring leather upper, stitched soles, and Velcro power-straps.

**Sizes:** Women's grey 4-10 full & half.

**Price:** \$ \_\_\_\_\_ pair

**Please Note:**

Manufacturers often make running product changes throughout the year. Items may not come as pictured.





#### **Vanilla Renegade**

All-new, leather Derby shoe from Vanilla.

**Sizes:** Women's 5-13.

**Price:** \$ \_\_\_\_\_ **pair**



#### **Vanilla Brass Knuckle**

Leather derby shoe from Vanilla.

**Sizes:** Women's 4-13.

**Price:** \$ \_\_\_\_\_ **pair**



#### **Vanilla 360**

This new boot features black denim and a stitched rubber sole.

**Sizes:** Men's 4-13,  
half sizes 7.5-10.5.

**Price:** \$ \_\_\_\_\_ **pair**



#### **Vanilla Freestyle**

Vanilla offers some classic style with their Freestyle.

**Sizes:** Men's black 4-13.

**Price:** \$ \_\_\_\_\_ **pair**



#### **Vanilla Diamond**

This is an all-new version of the Diamond boot.

**Sizes:** Men's 4-13,  
half sizes 7.5-10.5.

**Price:** \$ \_\_\_\_\_ **pair**



#### **1300 Rec Boot**

Sure-Grip's tan, leather boot great for outdoors or indoors. A true SoCal boot.

**Sizes:** Men's tan 4-14.

**Price:** \$ \_\_\_\_\_ **pair**



#### **#37 Fame**

Sure-Grip's super comfortable Fame boots.

Comfort out of the box.

**Sizes:** Men's black 1-13;  
ladies white 1-10.

**Price:** \$ \_\_\_\_\_ **pair**



#### **#93**

Top-grain leather uppers with padded memory-foam, fleece tongue, and notched uppers for flexibility.

**Sizes:** Men's black 4-13;  
ladies white 4-10 full & half.

**Price:** \$ \_\_\_\_\_ **pair**



#### **#73**

Top-grain leather uppers with padded memory-foam lining.

**Sizes:** Men's black 4-13;  
ladies white 4-10


**Price:** \$ \_\_\_\_\_ **pair**





*Sure-Grip*  
SKATE CO

CONNECT WITH US

 /SUREGRIP

 /SUREGRIPINT

 /SUREGRIPINTL

 /SUREGRIPINT



# VNLA

VANILLA x LOS ANGELES



Ryan Butler for VNLA





Extruded 7000 aluminum plates with Precision Click truck adjustment and Pure Urethane Cushions. 8mm axles. Fits sizes 4-13.

\$ \_\_\_\_\_ pair

Extruded Aluminum chassis with Aluminum Action Bolts and standard Action Bolt lock nut. 8mm axles. Fits sizes 4-13.

\$ \_\_\_\_\_ pair



Marathon 2

Cast aluminum plates come with fixed toe stops and 10 degree double-action trucks. Fits sizes 8J-12.

\$ \_\_\_\_\_ pair



Atlas Skate Plus

Artistic aluminum plate comes with adjustable toe stops and 10 degree double-action trucks with 7mm axles. Fits sizes 11J-12.

\$ \_\_\_\_\_ pair



Atlas Circle Master E97S

This aluminum figure skate comes with no toe stop and has 10 degree double-action trucks with 7mm axles. Fits sizes 11J-12.

\$ \_\_\_\_\_ pair



Labeda ProLine

The ProLine is back. This all-aluminum, USA made plate is the one that everyone else tries to copy. True precision trucks.

\$ \_\_\_\_\_ pair



Atlas Free Style

This aluminum plate comes with adjustable toe stops and has 10 degree double-action trucks with 7mm axles. Fits sizes 11J-13.

\$ \_\_\_\_\_ pair



#### Rock Plates

These nylon, double-action plates come in 9 different colors. Customize your skates.

Fits sizes 1-14

\$ \_\_\_\_\_ pair



#### Sure-Grip Probe

Nylon plates in black, blue, white, red, pink, and green. Comes with adjustable toe stops and 10 degree double-action trucks.

Fits sizes 1-14.

\$ \_\_\_\_\_ pair



#### Sure-Grip Junior Pro

Cast aluminum plates come with fixed toe stops and 10 degree double-action trucks.

Fits sizes 6J-2.

\$ \_\_\_\_\_ pair

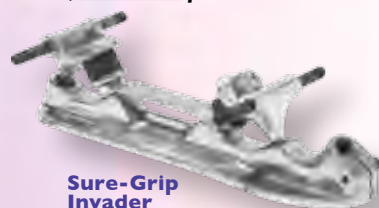


#### Sure-Grip Super-X

Cast aluminum plates come with fixed toe stops and 10 degree double-action trucks.

Fits sizes 1-16.

\$ \_\_\_\_\_ pair

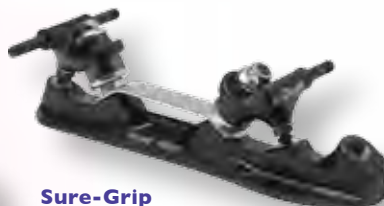


#### Sure-Grip Invader

Cast aluminum speed plates come with adjustable toe stops, jump bars, and 45 degree single-action trucks.

Fits sizes 1-13.

\$ \_\_\_\_\_ pair



#### Sure-Grip Invader Black DA45

Invader plate with 45 degree double-action, fully adjustable trucks.

Fits sizes 4-13.

\$ \_\_\_\_\_ pair



#### Sure-Grip Competitor

Cast aluminum plates come with adjustable toe stops, jump bars, and 10 degree double-action trucks.

Fits sizes 1-13.

\$ \_\_\_\_\_ pair



#### Sure-Grip Nova

Nylon plates come with adjustable toe stops, and 10 degree double-action trucks with 7mm axles.

Fits sizes 11J-11.

\$ \_\_\_\_\_ pair



#### Sure-Grip XK-4

Forged plate with racing profile, 45 degree single-action trucks, and adjustable toe stops. 7mm or 8mm. Fits sizes 4-13.

\$ \_\_\_\_\_ pair



#### Sure-Grip XK-4 DA

Same as the XK-4 but with double-action trucks at a 10 degree angle. 7mm or 8mm.

Fits sizes 4-13.

\$ \_\_\_\_\_ pair



#### Sure-Grip XK-4 DA45

XK-4 with 45 degree, double-action, fully adjustable trucks. 7mm or 8mm.

Fits sizes 4-13.

\$ \_\_\_\_\_ pair

#### Please Note:

Manufacturers often make running product changes throughout the year. Items may not come as pictured.



**ST Shark**

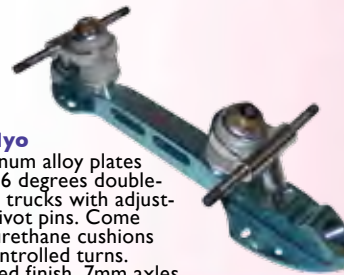
Aluminum alloy plates with 16 degrees double-action trucks with adjustable pivot pins. Come with urethane cushions for controlled turns. 7mm axles. Fits sizes 1-12.

\$ \_\_\_\_\_ **pair**

**ST Elyo**

Aluminum alloy plates with 16 degrees double-action trucks with adjustable pivot pins. Come with urethane cushions for controlled turns. Polished finish. 7mm axles. Fits sizes 1-12.

\$ \_\_\_\_\_ **pair**

**ST Ion**

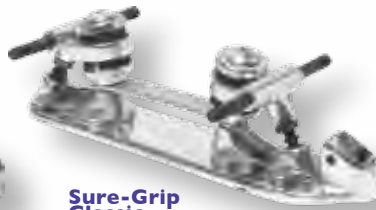
Aluminum alloy plates with 16 degrees double-action trucks with adjustable pivot pins. Come with urethane cushions for controlled turns. Hard anodized blue finish. 7mm axles. Fits sizes 1-12.

\$ \_\_\_\_\_ **pair**

**Sure-Grip Century**

Polished aluminum plates come with adjustable toe stops, jump bars, and 10 degree double-action trucks. Fits sizes 12-16.

\$ \_\_\_\_\_ **pair**

**Sure-Grip Classic**

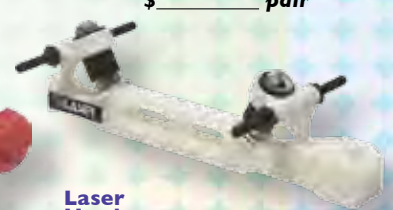
Polished aluminum plates come with adjustable toe stops, jump bars, and 10 degree double-action trucks with adjustable pivot pins. Fits sizes 1-14.

\$ \_\_\_\_\_ **pair**

**Sure-Grip PowerTrac**

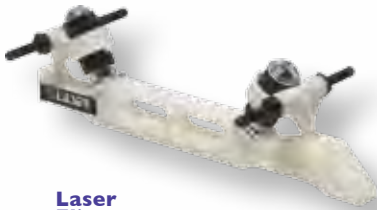
Polished aircraft aluminum plates come with adjustable toe stops, and micro adjustable 10 degree nylon trucks with 7mm axles. Fits sizes 4-13.

\$ \_\_\_\_\_ **pair**

**Laser Hardnose**

Old School nylon plate comes with adjustable toe stops and 45 degree single-action trucks. Fits sizes 5-13.

\$ \_\_\_\_\_ **pair**

**Laser Elite**

Same plate as the Hardnose, without toe stops. Fits sizes 5-13.

\$ \_\_\_\_\_ **pair**

**Snyder Advantage**

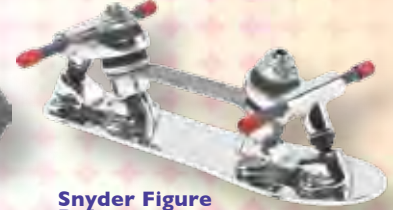
Aircraft aluminum plates come with 10 degree double-action trucks with adjustable pivot pins and 7mm axles. Fits sizes 4-14.

\$ \_\_\_\_\_ **pair**

**Snyder Super Deluxe**

Polished aluminum come with 10 degree double-action trucks with adjustable pivot pins and 7mm axles. Fits sizes 1-14.

\$ \_\_\_\_\_ **pair**

**Snyder Figure Deluxe**

Steel Flex plate with 10 degree double-action trucks and NO toe stop. 7mm axles. Fits sizes 1-14.

\$ \_\_\_\_\_ **pair**

**Snyder Imperial**

Forged aluminum plates with 45 degree double-action trucks. 7mm axles. Fits sizes 1-14.

\$ \_\_\_\_\_ **pair**

**Sure-Grip Avenger Magnesium**

All-new, super-light magnesium plates with double-action 45 degree trucks with white powder-coat finish.

\$ \_\_\_\_\_ **pair**

**Sure-Grip Avenger**

All-new aluminum plates with double-action 45 degree trucks with black powder-coat finish.

\$ \_\_\_\_\_ **pair**

**Avanti Aluminum**

All-new 10 degree, double-action, aircraft-grade aluminum plate from Sure-Grip.

\$ \_\_\_\_\_ **pair**

**Avanti Magnesium**

All-new 10 degree, double-action, magnesium plate from Sure-Grip.

\$ \_\_\_\_\_ **pair**

**Pilot Viper**

Zytel plates with 16 degree double-action, cast trucks.

\$ \_\_\_\_\_ **pair component /**  
\$ \_\_\_\_\_ **pair Luigino Package**

**Pilot Eagle**

Zytel plates with 16 degree double-action, cast micro-adjustable trucks.

\$ \_\_\_\_\_ **pair component /**  
\$ \_\_\_\_\_ **pair Luigino Package**

**Pilot Eagle Plus**

Zytel plates with 16 degree double-action, FORGED micro-adjustable trucks with adjustable pivot.

\$ \_\_\_\_\_ **pair component /**  
\$ \_\_\_\_\_ **pair Luigino Package**

**Pilot Falcon**

Aircraft aluminum plates with 16 degree double-action, cast micro-adjustable trucks.

\$ \_\_\_\_\_ **pair component /**  
\$ \_\_\_\_\_ **pair Luigino Package**

**Pilot Falcon Plus**

Aircraft aluminum with 16 degree double-action, FORGED micro-adjustable trucks with adjustable pivot.

\$ \_\_\_\_\_ **pair component /**  
\$ \_\_\_\_\_ **pair Luigino Package**



# Avanti

HIGH PERFORMANCE PLATES



10 DEGREE ALUMNUM

Fixed Pivot Action Trucks

\$99



10 DEGREE MAGNESIUM

Newly designed presicion  
Adjustable Trucks

\$190

Sure-Grip brings you the next generation in plate design.

[suregrip.com](http://suregrip.com)





### SG/Rock Double-Action Cushions

These cushions fit Probe and Rock plates

**Colors:** Black, white, red, blue, yellow, orange, pink, and green.

**Price:** \$\_\_\_\_\_ **set of 8**



### Sure-Grip Super Urethane Cushions

These double-action cushions give skater extreme control. Truck uses one regular and one conical.

**Colors / Hardnesses:** Blue (72A), Yellow (79A), Purple (85A), Red (93A)

**Price:** \$\_\_\_\_\_ **pack of 8**



### Bionic Bushings (Cushions)

Features high-rebound elastomers for long-life and superior response.

**Colors / Hardnesses:** Blue 88A, Red 90A, and Yellow 95A

**Price:** \$\_\_\_\_\_ **pack of 8**



### Rock Crazy Nuts

Add some style to your wheels with these stylish lock-nuts.

**Styles:** Bullet, Dice, 8-Ball, Skull

**Price:** \$\_\_\_\_\_ **pack of 4**



**Sure-Grip Zero Nutz** These new axle nuts won't back off, and they help keep dirt out of your bearings.

**Colors:** Black, Blue, Green, Purple, and Red.

**Price:** \$\_\_\_\_\_ **set of 8**



### Toe Caps

Covers the entire toe. Great for derby or rental skates.

**Colors:** Black or Tan

**Price:** \$\_\_\_\_\_ **pair**



### Sure-Grip Leather Toe-Guards

Increase the life of your boots with leather Toe-Guards.

**Colors:** Pink, Tan, White, Red, Blue, Black, Yellow, Green and Purple.

**Price:** \$\_\_\_\_\_ **pair**



### FoMac Plugs

These plugs come in either 5/8" or 5/16"

**Colors:** Black, White, Yellow, Green, Pink, Red, Blue, Purple and Teal.

**Price:** \$\_\_\_\_\_ **pair**



### Rock Jam Plugs

Available in 5/8" only.

**Colors:** Black, Blue, Clear, Green, Pink, Purple, White, Red and Yellow.

**Price:** \$\_\_\_\_\_ **pair**



### Iris Plugs

Metal shafted plugs available in 5/8" or 5/16"

**Colors:** Black, Blue, Red, and White.

**Price:** \$\_\_\_\_\_ **pair**



### Bullseye

Large non-adjustable stops.

**Colors:** Black, White, Red, Blue, Pink, Purple, and Green

**Price:** \$\_\_\_\_\_ **pair**



### All-Purpose Juvenile

**Colors:** Black, White, Grey, Pink, Blue and Red.

**Price:** \$\_\_\_\_\_ **pair**



### All-Purpose

**Colors:** Black, White, Grey, Pink, Blue and Red.

**Price:** \$\_\_\_\_\_ **pair**



### Web

Large, round adjustable stop.

**Colors:** Black and White

**Price:** \$\_\_\_\_\_ **pair**

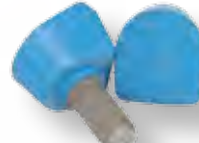


### Gripper

Adjustable full size speed stops

**Colors:** Black, White, Red, Blue, Pink, Purple, and Green

**Price:** \$\_\_\_\_\_ **pair**



### Nova

Adjustable mini speed stop

**Colors:** Blue

**Price:** \$\_\_\_\_\_ **pair**



### Bionic Super Stoppers

Max grip & stability with a large footprint.

**Size:** 20mm or 30mm shafts.

**Price:** \$\_\_\_\_\_ **pair**



### Sure-Grip RX Stops

Having trouble getting quick starts or making quick stops? We have the prescription.

**Colors:** Black, Blue, Green, Purple, Red, or Natural.

**Price:** \$\_\_\_\_\_ **pair**



### Snyder

Available in small, medium, or large.

**Price:** \$\_\_\_\_\_ **pair**



### Sure-Grip Shock Stop

All-new formula that adds bounce for jumps and grip for stops. Large surface allows for quick response.

**Size:** Short or standard shaft

**Price:** \$\_\_\_\_\_ **pair**



### Bionic Big Foot

Large 59mm footprint allows for superb grip without wheel rub.

**Material:** Grip or X-Grip

**Price:** \$\_\_\_\_\_ **pair**



**Please Note:**

Manufacturers often make running product changes throughout the year. Items may not come as pictured.

**Qube Bearing Puller/Press**

Bench-mount press for your skate room.

**Price:** \$\_\_\_\_\_ each

**Sure-Grip Bearing Press/Puller**

Travel-size bearing puller/press.

**Price:** \$\_\_\_\_\_ each

**Reflex Tool**

Deluxe all-in-one tool even comes with an 8mm axle dye for rethreading.

**Price:** \$\_\_\_\_\_ each

**Unit Tool**

Another great all-purpose tool. Perfect for derby or jam skaters.

**Price:** \$\_\_\_\_\_ each

**Bones Bearing Puller**

This simple 8mm bearing puller easily fits in your pocket.

**Price:** \$\_\_\_\_\_ each

**Snyder 2-piece Bearing Press**

Great for skate maintenance on the go.

**Price:** \$\_\_\_\_\_ each

**T-Allen Wrench**

3/16" Allen wrench.

**Price:** \$\_\_\_\_\_ each

**Elephant Wrench**

Pocket sized, all-in-one tool for Quads.

**Price:** \$\_\_\_\_\_ each

**#93 Skate Key**

Simple, truck wrench for Quads. May not come as pictured.

**Price:** \$\_\_\_\_\_ each

**#93OE Wrench**

Long-handled lock-nut wrench.

**Price:** \$\_\_\_\_\_ each

**#93A Wrench**

1/2" socket nut driver.

**Price:** \$\_\_\_\_\_ each

**Snyder Boot Marking Tool**

Get your plates mounted straight with this tool.

**Price:** \$\_\_\_\_\_ each

**Qube Lube**

All-new bearing lube from Qube.

**\$\_\_\_\_\_ each**

**Qube Citrus Cleaner**

8oz. of bearing cleaner. Use in Bones Bearing Washer.

**\$\_\_\_\_\_ each**

**Qube Bearing Spa**

This is a complete bearing cleaning system. Comes with Citrus Cleaner and cleans 16 bearings at a time.

**\$\_\_\_\_\_ each**

**Bones Speed Cream**

Bearing cream.

**\$\_\_\_\_\_ each**

**Bones Bearing Washer**

**\$\_\_\_\_\_ each**

**Bionic Bearing Wash**

Fast, easy, and thorough way to clean bearings. Fits 7 & 8mm bearings.

**\$\_\_\_\_\_ each**

**Bionic Bearing Cleaner**

Improve your bearings performance and increase their longevity.

**\$\_\_\_\_\_ each**

**Bionic Bearing Oil**

High-performance oil for skate bearings.

**\$\_\_\_\_\_ each**

**Lynx Swift Lube**

New race lube from Lynx Skate Products.

**Price:** \$\_\_\_\_\_ each





### Chinese ABEC-1

7mm & 8mm.

\$ \_\_\_\_\_ (16-pack)



### Bevo Bearings

ABEC-3 - 8mm only. - \$ \_\_\_\_\_ (16-pack)

ABEC-5 - 8mm only. - \$ \_\_\_\_\_ (16-pack)

ABEC-7 - 8mm only. - \$ \_\_\_\_\_ (16-pack)

ABEC-9 - 8mm only. - \$ \_\_\_\_\_ (16-pack)

Titanium - 8mm only. - \$ \_\_\_\_\_ (16-pack)



### Lynx

#### Performance Bearings

8mm Only

ABEC-5 - \$ \_\_\_\_\_ (16-pk)

ABEC-7 - \$ \_\_\_\_\_ (16-pk)

ABEC-9 - \$ \_\_\_\_\_ (16-pk)



### Bionix Swiss Bearings 8mm

Titanium ball bearings.

\$ \_\_\_\_\_ (16-pack)

### Bionix ABEC-7 Bearings

Requires no break-in period.

\$ \_\_\_\_\_ (16-pack)



### Freemspin Hi-Performance Bearings

7mm & 8mm.

\$ \_\_\_\_\_ (16-pack)

### Please Note:

Manufacturers often make running product changes throughout the year. Items may not come as pictured.



### RollerBones Bearings

Great all-around bearing.

8mm Only

Price: \$ \_\_\_\_\_ (16-pack)



### Bones REDS

A.K.A. "REDS." 7mm & 8mm.

\$ \_\_\_\_\_ (16-pack)

### Bones Super-6

Bigger and fewer balls for a faster roll.

8mm only.

\$ \_\_\_\_\_ (16-pack)

### Bones Swiss

7mm & 8mm.

\$ \_\_\_\_\_ (16-pack)

Labyrinth version for

\$ \_\_\_\_\_ (16-pack).

### Bones Ceramic

7mm & 8mm.

\$ \_\_\_\_\_ (16-pack)

### Super REDS

As fast as REDS, but quieter, smoother, and longer lasting. 8mm

\$ \_\_\_\_\_ (16-pk)

### Ceramic REDS

Super REDS with a Ceramic ball. 8mm

\$ \_\_\_\_\_ (16-pk)



### Qube Teal

Great ABEC-5 bearing for indoor or outdoor.

7mm & 8mm.

\$ \_\_\_\_\_ (16-pk)



### Qube Juice

Features Qube 3D technology, single Labyrinth seal, and SSL oil.

7mm & 8mm

\$ \_\_\_\_\_ (16-pk)



### Qube Black (8-Ball)

Patterned after the Fafnir bearing. The extra bearing helps distribute the load in turns.

7mm & 8mm

\$ \_\_\_\_\_ (16-pk)



### Qube Gold (Swiss)

Features Qube 3D technology in a Swiss bearing.

7mm & 8mm

\$ \_\_\_\_\_ (16-pk)



### Qube Ceramic

This bearing uses ceramic balls which allow it to last longer and perform better under harsh conditions.

7mm & 8mm

\$ \_\_\_\_\_ (16-pk)





Brandon Perea for VNLA





COMING SOON



63TA **FB-425**  
**\$179.00**  
MSR

86TA **FB-500**  
**\$239.00**  
MSR

**NEW**

**2014**

**Touros**

LOADED WITH PERFORMANCE FEATURES OF OUR **ADVANCED CODE TECHNOLOGY**  
REDUCED WEIGHT, COMFORT SUPPORT SYSTEM, DPS FRAME SYSTEM

**THE NEXT GENERATION OF FISHBONE**



**ProRider 360**

Bike-style helmet. Perfect for inline skating.

**Colors:** Black, Blue, and Red.

**Size:** X-S, S/M, L/XL

**Price:** \$ \_\_\_\_\_ each

**ProRider Aggressive**

Durable, lightweight and approved.

**Colors:** Black, Blue, and Red.

**Sizes:** X-S, S/M, L/XL

**Price:** \$ \_\_\_\_\_ each

**Tarmac 360 Tri-Pack**

Includes knee, wrist, and elbow pads.

**Sizes:** Youth, Adult small, medium, & large.

**Price:** \$ \_\_\_\_\_ set

**Sisu Jr, 1.6, or 2.4 Mouth Guards**

We now offer the popular Sisu Mouth Guards in a Jr. version for the younger Derby skaters. The 1.6 & 2.4 (thick) versions are still available, with the 1.6 being the most popular.

**Colors:** Jr. (Black, Pink, White), 1.6 (Black, Blue, Green, Pink, Purple, Red, White), 2.4 (Black, Blue, Pink, Red, White).

**Price:** \$ \_\_\_\_\_ (Jr. Version),

\$ \_\_\_\_\_ (1.6 Version),

\$ \_\_\_\_\_ (2.4 Version)

**Atom Gear Jr.**

Each pack contains a pair of elbow, knee, and wrist protection.

**Color:** Black & Pink.

**Size:** X-Small, Small

**Price:** \$ \_\_\_\_\_ 3-pack

**Atom Gear Adult Wrist & Palm Guard**

Contoured palm protection for fit and comfort.

**Size:** Small, Medium, Large, X-Large.

**Price:** \$ \_\_\_\_\_ pair

**Atom Gear Adult Elbow/Knee Combo**

Lightweight and breathable with a contoured hard cap.

**Size:** Small, Medium, Large, X-Large.

**Price:** \$ \_\_\_\_\_ 2-pack

**Atom Gear Elite 2.0 Knee Pads**

**Size:** Small, Medium, Large, X-Large.

**Price:** \$ \_\_\_\_\_ pair

**Atom Gear Elite 2.0 Elbow Pad**

**Size:** Small, Medium, Large, X-Large.

**Price:** \$ \_\_\_\_\_ pair





### Triple-8 Rubber Helmet

Rubberized shell with Triple-8's Sweatsaver liner.

**Colors:** Black, Royal, Grey.

**Sizes:** Small, Medium, Large, X-Large (Black only).

**Price:** \$ \_\_\_\_\_

### Triple-8 Gloss Helmets

Glossy finish.

**Colors:** Black, Pink, Purple

(Sweatsaver liner),

Gold (Sweatsaver liner).

**Sizes:** Small, Medium, Large

**Price:** \$ \_\_\_\_\_ (black, pink),

\$ \_\_\_\_\_ (purple, gold)



### Triple-8 Jr. Derby Tri-Pack

This is a great starter kit for those getting started in Jr. Derby. Add a helmet and mouth guard, and you're ready to go.

**Sizes:** Youth

**Price:** \$ \_\_\_\_\_ set



### Triple-8 Saver Tri-Pack

We now offer a complete set of Triple-8 safety gear. Just add a helmet and mouth guard.

**Sizes:** Junior, Small, Medium, Large

**Price:** \$ \_\_\_\_\_ set (Junior),

\$ \_\_\_\_\_ set (Small, Medium, Large)



### Triple-8

#### WristSaver2 Slide-On

Good all-around wrist guard.

**Sizes:** Small, Medium, Large

**Price:** \$ \_\_\_\_\_ pair



### Triple-8 Hired Hands

This glove is fully padded with shock absorbing foam layers and designed with top grain leather.

**Sizes:** Small, Medium, Large, X-Large

**Price:** \$ \_\_\_\_\_ pair



### Triple-8 EP55 Elbow Pads

Good all-around elbow pad.

**Sizes:** Small, Medium, Large, X-Large

**Price:** \$ \_\_\_\_\_ pair



### Triple-8 KP22 Knee Pads

Good all-around derby knee pad.

**Sizes:** Small, Medium, Large, X-Large

**Price:** \$ \_\_\_\_\_ pair



### Triple-8 KP-Pro Knee Pad

Pro style knee pad gives you the protection of larger pads.

**Sizes:** Medium, Large.

**Price:** \$ \_\_\_\_\_ pair



### Triple-8 RD WristSaver

Designed with a wider palm splint and snug-fit body to withstand the rigors of derby.

**Size:** Small, Medium, Large.

**Price:** \$ \_\_\_\_\_ pair



### Triple-8 RD Bumsaver

Designed specifically for Derby.

Washable and comes with extra padding for your fanny.

**Size:** Small, Medium, Large, X-Large.

**Price:** \$ \_\_\_\_\_ pair

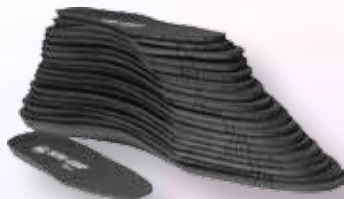




### Sure-Grip Sizing Stick

Helps with making sure the boot fits.

Price: \$ \_\_\_\_\_ each



### Contour Insoles

Need to add some comfort to your feet? Buy some insoles.

Sizes: 5-13

Price: \$ \_\_\_\_\_ pair



### Boot Covers

Add some style to your skates with a pair of boot covers. They're available in several different styles and colors.

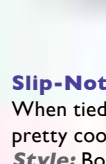
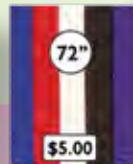
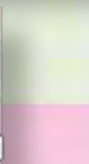
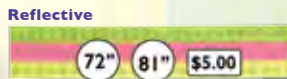
Price: \$ \_\_\_\_\_ pair



### PomPoms

The traditional skate accent is new again. Add some style to your skates.

Price: \$ \_\_\_\_\_ pair



Solid

Plaid

Fluorescent

Weave

Multi Colored

Double Sided

Fat Solid

Fat Fluorescent

Fat Argyle Blue

Fat Neon Plaid



### Slip-Not Laces

When tied, they STAY tied. They look pretty cool too. 72" only.

Style: Bomb, Broken Heart, Pink Heart, Rainbow, Moustache, Skull, Zebra, Star.

Price: \$6.50 pair



### Atom Trolley Bag

This bag will carry just about everything: Skates, clothes, and equipment.

Price: \$ \_\_\_\_\_ each



### Atom Wheel Bag

Have your wheels ready when switching skating surfaces with this handy wheel bag.

Price: \$ \_\_\_\_\_ each



### Atom Backpack

This backpack is perfect for carrying skates and basic gear.

Price: \$ \_\_\_\_\_ each



### All-Purpose Skate Bag

Great all-around skate bag.

Colors: Blue and Green.

Price: \$ \_\_\_\_\_ each



### Sure-Grip Nylon Saddle Bags

Saddle-style bag for easy carrying.

Colors: Pink, Blue, and Gray.

Price: \$ \_\_\_\_\_ each



### Sure-Grip Deluxe Saddle Bags

Stylish deluxe saddle bags.

Colors: Brown, Pink, Gray, Red, Black and Teal.

Price: \$ \_\_\_\_\_ each



### Metal Skate Case

Classic skate box for roller skates.

Ask dealer for available colors and styles.

Price: \$ \_\_\_\_\_ each



### Chicago Skate-Shaped Bag

This little bag's been around for years, and is perfect for a kid's pair of skates.

Colors: Red, Blue, Pink

Price: \$ \_\_\_\_\_ each



**CHEETAH (I-136)****STINGRAY (I-144)****STINGER 5.2 (I-141)****Please Note:**

Manufacturers often make running product changes throughout the year. Items may not come as pictured.

**VOYAGER (P212)****PRO LINE 900 (I-243)****AERIO Q-60 (I-259)****Cheetah (I-136)\***

All-new adjustable, youth skate that grows with you.

**Uppers:** Feature deluxe comfort liners, reinforced ankle support, and cam-lever buckles.

**Frames:** Reinforced polymer.

**Bearings:** Silver Speed 5 rated.

**Wheels:** Polyurethane wheels.

**Sizes:** Boys small (12J-2) and medium (3-6).

**Price:** \$\_\_\_\_\_ (New versions available early 2015)

**Stingray (I-144)\***

All-new adjustable youth inline skate with aluminum frames.

**Uppers:** Feature deluxe comfort liners, reinforced ankle support, and cam-lever buckles.

**Frames:** Aluminum.

**Bearings:** Silver Speed 7 rated.

**Wheels:** Polyurethane wheels.

**Sizes:** Boys & girls small (12J-2) and medium (3-6).

**Price:** \$\_\_\_\_\_ (New versions available early 2015)

**Stinger 5.2 (I-141)\***

All-new adjustable youth inline skate in girl's or boy's version.

**Uppers:** Adjustable comfort-fit washable liner and cam-lever buckles.

**Frames:** Polymer frames.

**Bearings:** Silver-5 Speed Rated (carbon).

**Wheels:** Polyurethane wheels.

**Sizes:** Boys & girls small (12J-2) and medium (3-6).

**Price:** \$\_\_\_\_\_

**Voyager (P212)\***

Great all-around buckle-up inline skate.

**Uppers:** Molded shell with overlay support piece and deluxe padded liner.

**Frames:** Plastic frames.

**Bearings:** ABEC-5 bearings.

**Wheels:** PU cast wheels.

**Sizes / Price:** 13J-4 \$\_\_\_\_\_ ; 5-12 \$\_\_\_\_\_

**Pro Line 900 (I-243)\***

Fitness skate with a great look.

**Uppers:** 3-piece molded shell with comfort liner.

**Frames:** Reinforced-nylon frame.

**Bearings:** Bevo ABEC-7.

**Wheels:** 76mm speed formula fitness wheels.

**Sizes:** Men's 5-11.

**Price:** \$\_\_\_\_\_

**Aerio Q-60 (I-259)\***

All-new high-performance fitness skate from Roller Derby.

**Uppers:** New soft-boot design with comfort memory-foam padding, and locking cam-lever buckles.

**Frames:** Aluminum Tri-Coil frames.

**Bearings:** Bevo Gold-7 Race-rated bearings.

**Wheels:** 80mm Elite Speed wheels.

**Sizes:** Men's 5-12.

**Price:** \$\_\_\_\_\_



**VANILLA CARBON****Please Note:**

Manufacturers often make running product changes throughout the year. Items may not come as pictured.

**VANILLA EMPIRE****VANILLA SPIDER****Vanilla Empire\***

Great racing skate at a great price.

**Boot:** Carbon fiber, heat-moldable boots.

**Frames:** 7000 Series aluminum frames with a 4x100mm set-up.

**Wheels:** 100mm 85A Indoor/Outdoor wheels.

**Bearings:** Vanilla Reaction ABEC-9 bearings.

**Sizes:** Men's 5-13.

**Price:** \$ \_\_\_\_\_

**Vanilla Spyder\***

A true racing outfit from Vanilla.

**Boot:** Ultra-lightweight, carbon fiber, heat-moldable boots.

**Frames:** 7000 Series aluminum frames with a 4x110mm set-up.

**Wheels:** 110mm 85A Indoor/Outdoor wheels.

**Bearings:** Vanilla Reaction Racing Spec bearings.

**Sizes:** Men's 5-13.

**Price:** \$ \_\_\_\_\_

**Vanilla Carbon\***

The perfect skate for those who are getting involved in speed skating, or those looking for a great fitness skate.

**Boot:** Half fiberglass and half carbon fiber.

**Frames:** 7000 aluminum racing frame. 3 x 100mm set-up for sizes 1-5 and a 4 x 100mm set-up for sizes 6-13.

**Wheels:** 100mm x 85A indoor/outdoor wheels.

**Bearings:** Vanilla Reaction ABEC-9 bearings.

**Sizes:** Men's 1-5 (3-wheel) and men's 6-13 (4-wheel)

**Colors:** Black or Blue.

**Price:** \$ \_\_\_\_\_



**TOUR ZT-800 (31TY)****TOUR FISH BONELITE FB-425 (63TA)****TOUR THOR 808 (37TY)****TOUR FISH BONELITE FB-500 (86TAW)****TOUR THOR 909 (52TA)****TOUR THOR BX PRO (85TA)****Tour ZT-800 (31TY)\***

All-new adjustable hockey skate that grows with you.

**Boots:** Tour boots with reinforced ankle support and deluxe comfort padding.

**Frames:** Aluminum frames.

**Wheels:** Formula speed urethane wheels.

**Bearings:** ABEC-7 carbon steel.

**Sizes:** Small (11J-1) and Medium (1-4).

**Price:** \$ \_\_\_\_\_

**Tour Thor 808 (37TY)\***

A great youth hockey skate from Tour.

**Boots:** Deluxe EVA comfort padding with custom reinforced ankle stabilizer and quick-dry lining.

**Frames:** Aluminum 6000 series.

**Wheels:** Tour Force Speed Formula Wheels.

**Wheel Sizes:** 12J-2 (68mm), 3-4 (72mm).

**Bearings:** ABEC-7 Race Series.

**Sizes:** Boys 12J-4.

**Price:** \$ \_\_\_\_\_

**Tour Thor 909 (52TA)\***

Offers great features at a great price.

**Boots:** Deluxe EVA comfort padding with custom reinforced ankle stabilizer and quick-dry lining.

**Frames:** Aluminum 6000 series.

**Wheels:** 76mm Tour Force Speed Formula Wheels.

**Bearings:** ABEC-7 Race Series.

**Sizes:** Men's 5-13.

**Price:** \$ \_\_\_\_\_

**Tour Fish Bonelite FB-425 (63TA)\***

New competition-level hockey skate.

**Boots:** Comfort-Fit system with lightweight Tuff-Skin exterior and custom lateral support stabilizer.

**Frames:** Tour aluminum frames.

**Wheels:** Tour Force Speed Grip 72mm (Sizes 1-4), 76mm (Sizes 5-6), and 80mm (Sizes 7-13).

**Bearings:** Bevo Gold-9 Race.

**Sizes:** 1-13.

**Price:** \$ \_\_\_\_\_

**Tour Fish Bonelite FB-500 (86TAW)\***

New performance hockey skate.

**Boots:** Comfort-Fit system with lightweight Tuff-Skin exterior and custom lateral support stabilizer.

**Frames:** Labeda Hum'er Eviction aluminum frames.

**Wheels:** Labeda RPG 76mm (Sizes 5-6), and 80mm (Sizes 7-13).

**Bearings:** Bevo Gold-9 Race.

**Sizes:** 5-13.

**Price:** \$ \_\_\_\_\_

**Tour Thor BX Pro (85TA)\***

A true performance skate from Tour.

**Boots:** Ultra light quarter panels with memory foam, VORRAC support system, quick-dry lining.

**Frames:** Labeda Hum'er Extreme aluminum frames.

**Wheels:** Labeda Millennium wheels. Size 3-4 (72mm), 5-6 (76mm), 7-13 (80mm).

**Bearings:** Bevo ABEC-9 racing bearings.

**Sizes:** Men's 3-13.

**Price:** \$ \_\_\_\_\_





*Sure-Grip*  
SKATE CO

CONNECT WITH US

