

S.E. Skate

No Limits



2016
Skate Catalog

Available At:

\$1.00



PACER GTX-500 MACH-5

Pacer GTX-500 Mach-5 (P-217)*

Pacer's GTX-500 is the best-selling skate being used in roller rinks today. The matte finish and ABEC-3 bearings give it a great look and performance.

Boots: Synthetic boots with Velcro power-straps.

Chassis: Nylon plates with fixed toe stops.

Wheels: Mach-5 63mm x 35mm wheels with mag hubs.

Bearings: ABEC-3.

Sizes: Men's black 1-12; men's white 1-10.

Price: \$ _____



VANILLA JUNIOR

NEW Vanilla Junior*

Vanilla's standard bearer.

Boots: Vanilla Junior model with durable lining, fully-stitched rubber outsole, and leather trim.

Chassis: Vanilla nylon frame featuring aluminum double-action trucks.

Wheels: Backspin 62mm wheels with nylon hubs.

Bearings: ABEC-7.

Styles: Tuxedo (Bk & Wht), Altitude (Grey & Neon Green), Code Red (Red & Bk).

Sizes: Men's 3-11.

Price: \$ _____



Rock GT-50

Rock GT-50*

The GT-50 is just a great, all-around skate. This comfortable skate has a little extra room for those with wider feet, and its padding makes it comfortable for everyone.

Boots: Rock GT-50 boots in either black, white or grey.

Chassis: Rock double-action plates with adjustable toe stops.

Wheels: Black & White swirled GT-50 wheels.

Bearings: Sure-Grip ABEC-5.

Sizes: Men's black 1-15; men's white 1-10; men's grey 4-13.

Price: \$ _____
(sizes 14 & 15 / \$ _____)



PACER CHARGER

Pacer Charger (P970)*

This youth speed skate looks awesome at the rink.

Boots: Speed profile with padded collar and Velcro power straps.

Chassis: Pacer polymer plates with fixed toe stops.

Wheels: 54mm polyurethane injected wheels.

Bearings: 608ZB sealed.

Sizes: Boy's black 10J-4; girl's white 10J-4.

Price: \$ _____



CHICAGO 400/405

Chicago 400/405*

This is a good entry-level skate for both children and adults.

Boots: Chicago synthetic boots.

Chassis: Chicago deluxe aluminum plates with double-action trucks and jump-bars.

Wheels: Chicago urethane rink wheels.

Bearings: Precision.

Sizes: Men's black (405) 1-13; ladies white (400) 1-11.

Price: \$ _____

TOUR FISH BONELITE-225
(58TA/48TY/38TY)**Tour Fish Bonelite-225
(58TA/48TY/38TY)***

Tour's all-new FB-225 is the perfect skate for getting into the sport of hockey.

Boots: Composite reinforced boots with Deluxe-Comfort padding, Quick-Dry lining, and reinforced ankle padding.

Frames: Tour aluminum Power Track Tri-Coil System.

Wheels: Tour Force Speed Formula Control Series Wheels. 38TY Sm (64mm), 38TY Med (72mm), 48TY (72mm), 58TA 5-6 (76mm), 58TA 7-13 (80mm).

Bearings: Bevo Silver-5 race rated bearings (chrome).

Sizes: 38TY adjustable (small 11J-1, medium 1-4), 48TY (12J-4), 58TA (5-13)

Price: \$ _____ (38TY), \$ _____ (48TY), \$ _____ (58TA)



STINGER 5.2 (1-141)

Stinger 5.2 (1-141)*

Adjustable youth inline skate in girl's or boy's version.

Uppers: Adjustable comfort-fit washable liner and cam-lever buckles.

Frames: Polymer frames.

Bearings: Silver-5 Speed Rated (carbon).

Wheels: Polyurethane wheels.

Sizes: Boys & girls small (12J-2) and medium (2-5).

Price: \$ _____

Sizing

The correct size is obviously the starting point when purchasing a new pair of skates. A skate should fit your foot like a pair of shoes, so you should allow between 1/4" and 1/2", depending on whether your foot is still growing. If you are a woman, make sure you pay special attention to the sizes that are available in each model. Some of the skates come in men's or ladies sizes, but some are only available in men's sizes. You may need to go down one size if you have to purchase a men's. Also, talk to the sales person where you received this catalog about whether a model tends to run a little large or small. If purchasing a custom package, you may want to order a boot only, so it can be returned if you need a different size. Also, be sure your new skates fit before you go skating on them.

There is no such thing as a "correct" plate size. Skaters use different lengths of plates depending on what type of skating they do or what's most comfortable for them. Below is some plate mounting terminology:

Short Mount: This method is preferred by many of the Derby skaters. Using a shorter plate, brings the axles closer together allowing for better high-speed cornering. The rear wheels are brought forward a little and the front wheels are at the widest part of the foot. New skaters may feel a little insecure with this mount, but once you find your "center" it's one of the best mounts for skating.

Regular Mount: A regular or standard mount is the most common. Most "out-of-the-box" package outfits utilize a standard mount. The rear wheels set back just a little more than a short mount. This mount gives new skaters a little more stability.

Long Mount: A long mount uses the longest plate that will fit on the boot. Jam skaters use the long mount because it enables them to perform tricks that involves spinning on the front wheels. The long mount also helps protect the toe of the boot. A long mount is very helpful for performing tricks and protecting the shoe, but it can also tire out the legs of someone that just enjoys skating around the oval.

Skate Terms

Some basic skate terms we are asked about are "durometer" and "ABEC."

Durometer refers to the hardness of a skate wheel. Typically, a soft wheel is grippy but slow, and a firm wheel is fast but slick. A low durometer represents a softer wheel, and a high durometer represents a firmer one. When skating outdoors, you should always try to use a wheel with a durometer of 88A or less. Most recreational, indoor wheels have a durometer of 95A which gives them a good roll, but they have less traction in tight turns. An indoor wheel with a durometer of 94A or less is considered to have "grip." An indoor wheel of 95A or higher is considered to be "firm."

The term "ABEC" stands for the Annular Bearing Engineers' Committee, and this committee determines standards for the Anti-Friction Bearing Manufacturers Association. Most bearings are given an ABEC rating to determine their heat tolerance, rotating accuracy, and other measurements. Basically, the higher the number, the better the bearing should be, but this is not a universal truth. Some companies, like Powell-Bones, sell bearings that are not rated. Yet, Powell-Bones manufactures some of the highest quality bearings available. Using the ABEC system when determining which bearing to purchase is a good starting point, but you should always be willing to talk to a sales associate about which bearing is the best for you.

Comparing Skates

When comparing the different skates pictured in this catalog be sure to look at the individual components. The boots, chassis, wheels, and bearings all work together in the performance of a pair of skates.

Boots: First determine whether you want a high-top or low-cut boot. This should be the easiest decision. Then determine what type of material you would like. Traditionally, leather has been the best material you could use to manufacture boots, but some of them are now made with a micro-fiber material which may be more durable than leather. If you are still growing, you may wish to go with a less expensive material, for you'll probably grow out of your skates before you wear them out.

Chassis: The chassis or plates are what make your skates work. They are typically made with aluminum or some form of plastic or nylon. One material is not necessarily better than the other. They are both very strong, and some of the high-end aluminum plates are actually lighter than their plastic counterparts. You should determine whether the type of skating you do works best with a single-action or double-action truck. Single-action means that the truck, the part of the skate that holds the wheels, has only one cushion, and they are at a 45 degree angle. They allow you to be closer to the floor and give you a feeling of stability when cornering at high speeds. Double-action means that each truck has two cushions and they are at a 10 degree angle. Double-action trucks allow for quicker turns, and make your skates feel much more responsive. Double-action trucks are the most common.

Wheels: When choosing a wheel, you should first determine whether you want a speed-type wheel, wide profile, or an artistic-type wheel, narrow profile. Speed wheels give you more stability and traction when cornering at high speeds, and artistic wheels allow you to make more responsive turns. Also, determine what durometer, or hardness, you desire in your wheels.

Bearings: On ABEC rated bearings, the higher the number, the better the bearing. Keep in mind that one company's ABEC-5 is not always the same as another company's ABEC-5. Also, there are some companies that don't use an ABEC rating on any of their bearings. If you want a good bearing, buy an ABEC-3 or higher, and if you want the best bearing buy a Swiss or ceramic.

**southeastern
SKATE SUPPLY INC**

www.ses skate.com

www.roller-rink.com

Table of Contents

Page.....	Category
4-5.....	Kid's
6-21.....	Speed / Derby / Low Tops
24-27.....	High Tops / Artistic
28-31.....	Outdoor
34-37.....	Speed / Derby Wheels
38-39.....	Art / Rec Wheels
39.....	Outdoor Wheels
42-43.....	Boots
46-47.....	Plates
49.....	Accessories / Stoppers
50.....	Tools / Lube
51.....	Bearings
54-56.....	Safety, Laces, Bags & Cases
57.....	Inlines
58.....	Inline Race
59.....	Inline Hockey



FUN ROLL ADJUSTABLE (I-359)

Fun Roll Adjustable (I-359)*

Beginner skate featuring a low-center of gravity and dual heel brakes to keep young skaters from falling backwards.

Boots: Plastic shell with deluxe-padded liners.

Chassis: Adjustable.

Wheels: Polyurethane wheels with rear wheels set wide for stability.

Bearings: G-Force 608ZB.

Sizes: Boys blue & yellow small (7J-11J), medium (11J-2); girls pink & white small (7J-11J), medium (11J-2)

Price: \$ _____



CHICAGO SIDEWALK SKATE

Chicago Sidewalk Skate (100/105)*

This skate can be used in the rink or on the sidewalk. It will help a child gain confidence skating on their own skates.

Boots: Chicago boots with padded ankle collar and Velcro strap.

Chassis: Chicago plates with adjustable trucks.

Wheels: Chicago wheels.

Bearings: Semi-precision.

Sizes: Boy's black 12J-5; girl's white 12J-5.

Price: \$ _____



PACER ZTX

Pacer ZTX (P361/P961)*

Pacer's all-purpose kid's skate can be used indoors or out.

Boots: Pacer children's boot with ankle support straps.

Chassis: Pacer plastic plates.

Wheels: Pacer urethane wheels.

Bearings: Sealed.

Sizes: Boy's black 12J-5; girl's white 12J-5.

Price: \$ _____



CHICAGO KID'S RINK SKATE

Chicago Kid's Rink Skate (1900/1905)*

This child's skate is for those who want a more traditional look.

Boots: Chicago Tigerlon boots.

Chassis: Chicago plates with adjustable trucks.

Wheels: Chicago 52mm urethane wheels.

Bearings: Semi-precision.

Sizes: Boy's black (1905) 10J-4; girl's white (1900) 10J-4.

Price: \$ _____



CHICAGO ADJUSTABLE

Chicago Adjustable Quad (210/215)*

Adjustable skate from Chicago.

Boots: Adjustable shell with breathable mesh liners and adjustable micro-ratchet buckles.

Chassis: Easy push-button adjustable plates.

Wheels: Chicago all-purpose wheels.

Bearings: 608Z Semi Precision.

Sizes: Boys blue/silver/black small (10J-13J), medium (1-4); girls purple/silver/white small (10J-13J), medium (1-4).

Price: \$ _____



PACER XT-70

Pacer XT-70 (P960)*

This adjustable skate from Pacer can be used indoors or out, and it is great for growing children.

Boots: Adjustable shells with removable comfort liners.

Chassis: Plastic, adjustable plates.

Wheels: Polyurethane injected wheels.

Bearings: Long Life

Sizes: Boys black/red small (12J-1), medium (2-4); girls white/pink small (12J-1), medium (2-4).

Prices: \$ _____



PACER CHARGER

Pacer Charger (P970)*

This youth speed skate looks awesome at the rink.

Boots: Speed profile with padded collar and Velcro power straps.

Chassis: Pacer polymer plates with fixed toe stops.

Wheels: 54mm polyurethane injected wheels.

Bearings: 608ZB sealed.

Sizes: Boy's black 10J-4; girl's white 10J-4.

Price: \$ _____



PACER COMET

Pacer Comet (P971)*

Popular light-up skate from Pacer.

Boots: Speed profile with padded collar and Velcro power straps.

Chassis: Pacer polymer plates with fixed toe stops.

Wheels: 54mm polyurethane injected wheels. Outside wheels light up as you skate.

Bearings: 608ZB sealed.

Sizes: Boy's silver 12J-5; girl's purple 12J-5.

Price: \$ _____



CHICAGO 500/505 TRAINING COMBO

Chicago 500/505 Training Combo*

Comes with all you need to get started skating. The 2-in-1 skate easily converts from a trainer to an inline.

Included: Trainer skates, helmet, backpack, knee pads & wrist guards.

Upper: Hard-shell adjustable upper with padded liners.

Sizes: Boys blue small (10J-13J), medium (1-4); girls pink & purple small (10J-13J), medium (1-4).

Price: \$ _____

REWIND
(U772BK)**Rewind (U772BK)***

Roller Derby's brand-new recreational skate that is great both in the rink and on the sidewalk.

Boots: Vinyl boot with comfort lining, embossed upper, and comfort heel.

Chassis: Nylon plates with double-action aluminum trucks.

Wheels: 58 x 33mm wheels in 82A durometer.

Bearings: ABEC-5 Carbon bearings.

Sizes: Men's black 3-12.

Price: \$ _____



CANDI GRL SABINA

**Candi Grl Sabina (U772)***

Roller Derby's brand-new recreational skate that is great both in the rink and on the sidewalk. Fun and stylish.

Boots: Vinyl boot with comfort lining, embossed upper, and comfort heel.

Chassis: Nylon plates with double-action aluminum trucks.

Wheels: 58 x 33mm wheels in 82A durometer.

Bearings: ABEC-5 Carbon bearings.

Sizes: Ladies black/teal, mint, and white/pink 3-10.

Price: \$ _____

Wow Colors!



CHICAGO BULLET

Chicago Bullet (B100)*

This speed skate from Chicago remains one of the best-selling skates of all-time.

Boots: Chicago vinyl speed boots.

Chassis: Lightweight, plastic plates with aluminum trucks.

Wheels: Bullet 58mm speed-style wheels with hubs.

Bearings: Carbon ABEC-1.

Sizes: Men's black 1-12; ladies white 1-10.

Price: \$ _____



PACER GTX-500 MACH-5

Pacer GTX-500 Mach-5 (P-217)*

Pacer's GTX-500 is the best-selling skate being used in roller rinks today. The matte finish and ABEC-3 bearings give it a great look and performance.

Boots: Synthetic boots with Velcro power-straps.

Chassis: Nylon plates with fixed toe stops.

Wheels: Mach-5 63mm x 35mm wheels with mag hubs.

Bearings: ABEC-3.

Sizes: Men's black 1-12; men's white 1-10.

Price: \$ _____



PACER HEART THROB

Pacer Heart Throb (P-218)*

This fun skate from Pacer will be sure to attract attention.

Boots: Synthetic boots with a fun, playful pattern.

Chassis: Nylon plates with fixed toe stops.

Wheels: 64mm x 35mm wheels with mag hubs.

Bearings: Chrome ABEC-5.

Sizes: Ladies black graffiti 1-10; ladies red graffiti 1-10.

Price: \$ _____



ROLLER DERBY REVIVE LITE (P221)

Roller Derby Revive Lite (P221)*

Brand-new skate from Roller Derby with light-up sole. The bottom of the boot lights up with integrated LED lights that blink in different colors. The lights are rechargeable.

Boots: Synthetic boots with Velcro power-straps and LIGHT-UP soles.

Chassis: Nylon plates with fixed toe stops.

Wheels: 63 x 35mm wheels with mag hubs.

Bearings: ABEC-3.

Sizes: Men's black 3-12, men's white 3-10.

Price: \$ _____

Roller Derby Elite Stomp 5*

The Stomp-5 is the latest addition to Roller Derby's Elite line of skates.

Boots: PU upper in 4 color choices.

Chassis: Nylon plates with double-action trucks and adjustable toe stops.

Wheels: 63mm Urethane speed wheels.

Bearings: ABEC-9 Chrome bearings.

Sizes: Men's Black 4-12; Men's Green, Pink, or Red 4-11.

Price: \$ _____

ROLLER DERBY ELITE STOMP 5**Sure-Grip Cyclone***

A brand-new speed skate from Sure-Grip that comes in an assortment of colors. Offer Sure-Grip quality at a great price.

Boots: Vinyl boots with comfort padding and four color choices.

Chassis: Rock double-action plates with adjustable toe stops.

Wheels: High rebound 62mm speed wheels.

Bearings: ABEC-5 speed bearings.

Sizes: Men's 4-10 Black, Blue, Pink, or Purple.

Price: \$ _____

Fast!

Rock GT-50**Rock GT-50***

The GT-50 is just a great, all-around skate. This comfortable skate has a little extra room for those with wider feet, and its padding makes it comfortable for everyone.

Boots: Rock GT-50 boots in either black, white, or grey.

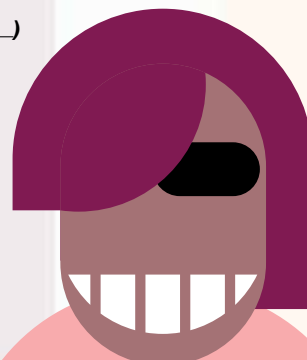
Chassis: Rock double-action plates with adjustable toe stops.

Wheels: Black & White swirled GT-50 wheels.

Bearings: Sure-Grip ABEC-5.

Sizes: Men's black 1-15; men's white 1-10; men's grey 4-13.

Price: \$ _____
(sizes 14 & 15 / \$ _____)



Avanti

HIGH PERFORMANCE PLATES



10 DEGREE ALUMNUM

Fixed Pivot Action Trucks

\$99



10 DEGREE MAGNESIUM

Newly designed precision

Adjustable Trucks

\$190

Sure-Grip brings you the next generation in plate design.

suregrip.com



REVIVE
LIGHT 

www.rollerderby.com

GT-50 CLAWZ



GT-50 Clawz†

Personalize your GT-50's, and upgrade their performance without breaking the bank. Pick out your favorite color of Clawz wheels.

Boots: Rock GT-50 boots in either black, white, or grey.

Chassis: Rock double-action plates with adjustable toe stops.

Wheels: Clawz wheels in your choice of colors.

Bearings: Lynx ABEC-7 racing.

Sizes: Men's black 1-15; men's white 1-10; men's grey 4-13.

Price: \$ _____
(sizes 14 & 15 / \$ _____)

Rock GT-50 HEAT



Rock GT-50 Heat†

Add some performance to your GT-50's.

Boots: Rock GT-50 boots in either black, white or grey.

Chassis: Rock double-action plates with adjustable toe stops.

Wheels: BackSpin's all-new Heat Series wheel. Can order any BackSpin wheel with PC hubs at the same price.

Bearings: Lynx ABEC-7 racing.

Sizes: Men's black 1-13; men's white: 1-10; men's grey 4-13.

Price: \$ _____
(sizes 14 & 15 / \$ _____)

Rock GT-50 PLUS LIGHT-UP



Rock GT-50 Plus Light-Up†

This is the most dynamic light-up skate made. Several different programs allow the lights to burn solid colors or blink in multiple colors, or simply fade from one color to the next. Comes with a USB cord for charging.

Boots: Boots feature a vinyl outsole, comfort-padded lining, cinch-strap, and rubber sole with integrated LED lights.

Chassis: Rock double-action plates with adjustable toe stops.

Wheels: Sure-Grip 62mm speed wheels.

Bearings: ABEC-5 bearings.

Sizes: Men's black 4-10

Price: \$ _____

Rock GT-50 CUSTOM



GT-50 Custom†

Get out of the ordinary and step into the extraordinary. Set your GT-50's apart with your own custom look.

Boots: Rock GT-50 boots in either black or white.

Chassis: Rock plates in your choice of 9 different colors.

Wheels: Clawz 62mm wheels in your choice of 9 different colors.

Laces: Pick out the laces of your choice.

Bearings: Lynx ABEC-7 racing.

Sizes: Men's black 1-13; men's white 1-10.

Price: \$ _____



Go! Way!

SURE-GRIP BOXER DERBY



Sure-Grip Boxer Derby*

"I am leaving. I am leaving. But, the fighter still remains." The Boxer

Boots: Synthetic leather Boxer boots.

Chassis: Rock nylon plates with double-action trucks and adjustable toe stops.

Wheels: Boxer Derby 59mm wheels (89A).

Bearings: Sure-Grip ABEC-7 bearings.

Sizes: Men's black 3-10; men's white 3-10.

Price: \$ _____

ROCK SKATE WITH FLAME DESIGN



Rock Skate with Flame Design*

Rock is constantly updating their line of Flame skates. The new purple version is very popular right now.

Boots: Rock speed boots with comfort padding, deluxe footbed, and embroidered flames.

Chassis: Rock nylon, double-action plates with adjustable toe stops.

Wheels: Sure-Grip Twister wheels.

Bearings: Sure-Grip ABEC-5.

Sizes: Men's 1-10 in Black/Blue, Black/Pink, Black/Red

Men's 3-10 in Purple/Silver

Men's 1-13 in Black/Green

Price: \$ _____



REBEL FUGITIVE

Rebel Fugitive†

Your choice of Fugitive wheels turns the Rebel into a true Derby skate.

Boots: Sure-Grip leather boots with elastic tongue stays, ankle protection, and box-toe comfort-fit.

Chassis: Sure-Grip Probe plates in black with reverse kingpins and adjustable toe stops.

Wheels: Sure-Grip 62mm Fugitive hi-performance wheels in your choice of color.

Bearings: Sure-Grip ABEC-7.

Sizes: Men's Black 1-14; Men's White or Pink 3-11;

Men's Yellow, Purple, or Blue 3-12; Men's Green or Red 3-13.

Price: \$ _____





REBEL TWISTER



SURE-GRP REBEL D.O.D.

Sure-Grip Rebel D.O.D.†

This Rebel set-up gets you ready for Friday night skating or the upcoming Derby Bout.

Boots: Sure-Grip leather boots with elastic tongue stays, ankle protection, and box-toe comfort fit.

Chassis: Sure-Grip Probe plates in black with reverse kingpins and adjustable toe stops.

Wheels: RollerBones Day of The Dead derby/speed wheels in black or white. White (80A,86A,92A,94A,96A) or black (92A,94A).

Bearings: Lynx ABEC-7 racing bearings.

Sizes: Men's Black 1-14. Men's White or Pink 3-11. Men's Yellow, Purple, or Blue 1-12. Men's Green or Red 3-13.

Price: \$ _____

Rebel Twister†

Add a little twist to the Rebel.

Boots: Sure-Grip leather boots with elastic tongue stays, ankle protection, and box-toe comfort-fit.

Chassis: Sure-Grip Probe plates in black with reverse kingpins and adjustable toe stops.

Wheels: Sure-Grip Twister speed wheels.

Bearings: Sure-Grip ABEC-7.

Sizes: Men's Black 1-14

Men's White or Pink 3-11

Men's Yellow, Purple,
or Blue 3-12

Men's Green or Red 3-13.

Price: \$ _____

Totally Twisted

Labeda Voodoo U-3 Outfit (L642)*

Get off your rear and get into gear with Labeda's line of skates.

Boots: Stylish Satinene boots with comfort padding and hidden lace system.

Chassis: RTX6000 frame with adjustable toe stops.

Wheels: 63 x 42mm Labeda Cliff Hanger wheels.

Bearings: Chrome ABEC-9 Race Series.

Sizes: Men's black 4-13; men's red 4-13; and men's blue 4-13.

Price: \$ _____

LIMITED AVAILABILITY

LABEDA VOODOO U-3

Surfer!

LABEDA VOODOO U-7**Labeda Voodoo U-7 Outfit (L660)***

Yes, the boot is leather; yes, the sole is stitched; yes, the sole is leather; no, it will not require a loan to purchase. The most affordable leather, stitched sole skate on the market.

Boots: Labeda full-grain leather boots with leather, stitched soles in black, white, or green.

Chassis: RTX6000 frame with adjustable toe stops.

Wheels: Labeda Night Ryder 63mm x 42mm wheels.

Bearings: Chrome ABEC-9 racing.

Sizes: Men's black (L660B); men's white (L660W); and men's green (L660G). 4-13 (halves 5.5 to 10.5).

Price: \$ _____

LIMITED AVAILABILITY



STOMP FACTOR-2 PACKAGE

Stomp Factor-2 Package (RE315)*

Roller Derby introduces the Factor-2 for those who are regular rink skaters or for "Fresh Meat" that is just entering into Derby.

Boots: All-new boots from Roller Derby's Elite line. The Stomp Factor-2 boots feature top-grain leather with power-straps and molded sole.

Chassis: Roller Derby's RTX6000 frame with adjustable toe stops.

Wheels: Raider 62mm x 40mm speed wheels.

Bearings: Bevo Gold-7 racing.

Sizes: Men's black 4-12.

Price: \$ _____



Stomp Factor-2 Plus Package (RE320)*

Combines the Factor-2 boot with the all-new aluminum chassis.

Boots: All-new boots from Roller Derby's Elite line. The Stomp Factor-2 boots feature top-grain leather with power-straps and molded sole.

Chassis: The Neutron 6000 is an extruded aluminum plate with reverse kingpins.

Wheels: Militia 59mm x 38mm wheels that combine grip and roll.

Bearings: SWISS Elite.

Sizes: Men's black 4-12.

Price: \$ _____



STOMP FACTOR-2 PLUS



STOMP FACTOR-1 COMBO



Stomp Factor-1 Combo (R364)*

Stomp's top-of-the-line package for Derby.

Boots: The Factor-1 boot is top-grain leather and features leather, stitched soles. Available in black, green, or red.

Chassis: The all-new Octane Pro 7000 series extruded aluminum plates. They feature fully adjustable click-truck adjustment.

Wheels: Alpha 59mm x 38mm wheels with aluminum hubs.

Bearings: SWISS Elite.

Sizes: Men's black, green, or red 4-12.

Price: \$ _____





STOMP FACTOR-1 W/G-ROD HP

Stomp Factor-1 w/ G-Rod HP†

Combining the Stomp Factor-1 with Atom's new G-Rod HP.

Boots: The Factor-1 boot is top-grain leather and features leather, stitched soles. Available in black, green, or red.

Chassis: The Octane Pro 7000 series extruded aluminum plates. They feature fully adjustable click-truck alignment.

Wheels: Atom G-Rod alloy wheels in 93A. Available in 59x35mm (white hub), 59x38mm (black hub), and 62x44mm (black hub).

Bearings: Lynx ABEC-7 racing.

Sizes: Men's black, green, or red 4-12.

Price: \$_____

Stomp!

STOMP FACTOR-1 AVENGER TURBO



Factor-1 Avenger Turbo†

We've combined the Stomp Factor-1 boot with Sure-Grip's DA45 Avenger plate and RollerBones Turbo wheels.

Boots: The Factor-1 boot is top-grain leather and features leather, stitched soles. Available in black, green, or red.

Chassis: Sure-Grip's Avenger plates with double-action 45 degree trucks. Plates come in black aluminum or white magnesium. (Magnesium is an additional \$50)

Wheels: RollerBones Turbo wheels with aluminum hubs. Check page 37 for all of the wheel options.

Bearings: Lynx ABEC-7 racing.

Sizes: Men's black, green, or red 4-12.

Price: \$_____ / \$_____ (white magnesium plate)

Note: Avenger plates will come "short-mounted" unless specified when ordering.



VANILLA JUNIOR

NEW Vanilla Junior*

Vanilla's standard bearer.

Boots: Vanilla Junior model with durable lining, fully-stitched rubber outsole, and leather trim.

Chassis: Vanilla nylon frame featuring aluminum double-action trucks.

Wheels: Backspin 62mm wheels with nylon hubs.

Bearings: ABEC-7.

Styles: Tuxedo (Bk & Wht), Altitude (Grey & Neon Green), Code Red (Red & Bk).

Sizes: Men's 3-11.

Price: \$ _____



VANILLA 360 PRO

Vanilla 360 PRO*

Combine Vanilla's all-new 360 boots with your choice of Backspin wheels.

Boots: Vanilla's all-new jam boot.

Chassis: Vanilla Gorilla nylon plates with aluminum trucks.

Wheels: Your choice of any Backspin wheels.

Bearings: ABEC-7.

Sizes: Men's 4-13.

Price: \$ _____ (Nylon-hubbed wheels)
\$ _____ (Aluminum-hubbed wheels)



VANILLA BLACKOUT PRO

Vanilla Blackout PRO*

Combine Vanilla's Brass Knuckle (Blackout) boots with your choice of nylon-hubbed Backspin wheels.

Boots: Vanilla Italian leather Brass Knuckle (Blackout) boots with stitched-leather soles.

Chassis: Vanilla Gorilla nylon plates with aluminum trucks.

Wheels: Your choice of any Backspin wheels with nylon hubs.

Bearings: ABEC-7.

Sizes: Ladies black 4-13 (halves 7.5-10.5), B/D width.

Price: \$ _____



VANILLA BLACKOUT PRO PLUS



Vanilla Blackout PRO Plus*

Combine Vanilla's Brass Knuckle (Blackout) boots with your choice of aluminum-hubbed Backspin wheels.

Boots: Vanilla Italian leather Brass Knuckle (Blackout) boots with stitched-leather soles.

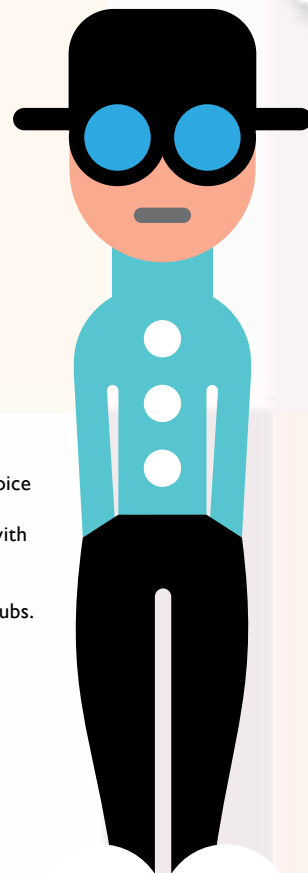
Chassis: Vanilla Gorilla nylon plates with aluminum trucks.

Wheels: Your choice of any Backspin wheels with aluminum hubs.

Bearings: ABEC-7.

Sizes: Ladies black 4-13 (halves 7.5-10.5), B/D width.

Price: \$ _____



VANILLA FREESTYLE PRO



VANILLA FREESTYLE PRO PLUS

Vanilla Freestyle PRO*

Combine Vanilla's Freestyle boots with your choice of nylon-hubbed Backspin wheels.

Boots: Vanilla Italian leather Freestyle boots with stitched-leather soles.

Chassis: Vanilla Gorilla nylon plates with aluminum trucks.

Wheels: Your choice of any Backspin wheel with nylon hubs.

Bearings: ABEC-7.

Sizes: Men's black 4-13 (halves 7.5-10.5), D width.

Price: \$ _____

Vanilla Freestyle PRO Plus*

Combine Vanilla's Freestyle boots with your choice of aluminum-hubbed Backspin wheels.

Boots: Vanilla Italian leather Freestyle boots with stitched-leather soles.

Chassis: Vanilla Gorilla nylon plates with aluminum trucks.

Wheels: Your choice of any Backspin wheels with aluminum hubs.

Bearings: ABEC-7.

Sizes: Men's black 4-13 (halves 7.5-10.5), D width.

Price: \$ _____



VANILLA DIAMOND PRO

Vanilla Diamond PRO*

Combine Vanilla's Diamond boots with your choice of nylon-hubbed Backspin wheels.

Boots: Vanilla Italian leather Diamond boots with stitched-leather soles.

Chassis: Vanilla Gorilla nylon plates with aluminum trucks.

Wheels: Your choice of any Backspin wheels with nylon hubs.

Bearings: ABEC-7.

Sizes: Men's black w/ red 4-13 (halves 7.5-10.5), D width.

Price: \$_____

VANILLA DIAMOND PRO PLUS

**Vanilla Diamond PRO Plus***

Combine Vanilla's Diamond boots with your choice of aluminum-hubbed Backspin wheels.

Boots: Vanilla Italian leather Diamond boots with stitched-leather soles.

Chassis: Vanilla Gorilla nylon plates with aluminum trucks.

Wheels: Your choice of any Backspin wheels with aluminum hubs.

Bearings: ABEC-7.

Sizes: Men's black w/ red 4-13 (halves 7.5-10.5), D width.

Price: \$_____



REBEL AVENGER FUGITIVE

Rebel Avenger Fugitive†

We've combined Sure-Grip's Derby boot with the also popular Avenger plate.

Boots: Sure-Grip leather Rebel boots in Black.

Chassis: Sure-Grip's Avenger plates with double-action trucks at a 45 degree angle.

Wheels: Sure-Grip 62mm Fugitive wheels. Check available colors and widths on the wheel pages.

Bearings: Lynx ABEC-7 racing.

Sizes: Men's 3-13.

Price: \$_____

Note: Avenger plates will come "short-mounted" unless specified when ordering.



REBEL AVANTI FUGITIVE

Rebel Avanti Fugitive†

The leather Rebel boot is combined with the brand-new Avanti plate from Sure-Grip.

Boots: Sure-Grip leather Rebel boots in Black.

Chassis: Sure-Grip's all-new Avanti plate with 10 degree, double-action trucks. Plates come in aluminum or white magnesium.

Wheels: Sure-Grip 62mm Fugitive wheels. Check for available colors and durometers on the wheels pages.

Bearings: Lynx ABEC-7 racing.

Sizes: Men's 3-13.

Price: \$_____ (with aluminum Avanti plates)

\$_____ (with magnesium Avanti plates)



SPEED BUGGY

Speed Buggy†

A custom skate that will not break the bank.

Boots: Sure-Grip's S-55 boots with leather uppers and stitched soles.

Chassis: Rock double-action plates in your choice of 9 colors.

Adjustable toe stops.

Wheels: Sure-Grip Zoom 62mm speed wheels in your choice of color.

Bearings: Lynx ABEC-7 racing.

Sizes: Men's black 4-13.

Price: \$ _____



S55 AVANTI FUGITIVE

S55 Avanti Fugitive†

Great choice for those who are always on the floor.

Boots: Sure-Grip's S-55 boots feature leather uppers and stitched soles.

Chassis: Sure-Grip's all-new Avanti plate with 10 degree, double-action trucks. Plates come in aluminum or white magnesium.

Wheels: Sure-Grip 62mm Fugitive wheels. Check for available colors and durometers on the wheels pages.

Bearings: Lynx ABEC-7 racing.

Sizes: Men's black 4-12.

Price: \$ _____ (with aluminum Avanti plates)

\$ _____ (with magnesium Avanti plates)



RAISIN' CAIN

Raisin' Cain†

Sometimes you just have to raise a little Cain.

Boots: Sure-Grip's S-75 with leather, stitched soles and Velcro power-strap.

Chassis: Rock double-action plates in your choice of 9 colors.

Adjustable toe stops.

Wheels: Sure-Grip 62mm Fugitive wheels with speed formula. Pick out the color and width you like.

Bearings: Lynx ABEC-7 racing.

Sizes: Men's black 4-13.

Price: \$ _____



S75 AVANTI ROLL-OUT

S75 Avanti Roll-Out†

Nice set-up for the serious skater.

Boots: Sure-Grip's S-75 leather boots with stitched leather soles and Velcro power-strap.

Chassis: Sure-Grip's all-new Avanti plate with 10 degree, double-action trucks. Plates come in aluminum or white magnesium.

Wheels: Sure-Grip Roll-Out wheels in 59x38mm or 62x38mm. Choice of purple (89A), teal (92A), red (95A), or green (98A).

Bearings: Lynx ABEC-7 racing.

Sizes: Men's black 4-12.

Price: \$ _____ (with aluminum Avanti plates)

\$ _____ (with magnesium Avanti plates)



S75 AVANTI ZOMBIE

S75 Avanti Zombie†

Classic style and performance.

Boots: Sure-Grip's S-75 leather boots with stitched leather soles and Velcro power-straps.

Chassis: Sure-Grip's all-new Avanti plate with 10 degree, double-action trucks. Plates come in aluminum or white magnesium.

Wheels: Sure-Grip Zombie wheels in your choice of 58mm, 62mm narrow, or 62mm wide in 89A, 92A, 95A, or 98A.

Bearings: Lynx ABEC-7 racing.

Sizes: Men's black 4-12.

Price: \$_____ (with aluminum Avanti plates)
\$_____ (with magnesium Avanti plates)



S75 AVENGER DAY OF THE DEAD

S75 Avenger Day of the Dead†

This stealth skate has been updated with the new D.O.D. wheels from RollerBones.

Boots: Sure-Grip's S-75 with leather, stitched soles and Velcro power-strap.

Chassis: Sure-Grip's Avenger plates with double-action trucks at a 45 degree angles. Plates come in black aluminum or white magnesium (Magnesium is an additional \$50).

Wheels: RollerBones all-new Day of the Dead speed wheels in your choice of 80A, 86A, 92A, 94A, 96A or black(92A, 94A).

Bearings: Qube 8-Ball.

Sizes: Men's black 4-13.

Price: \$_____ / \$_____ (white Magnesium plate)

Note: Avenger plates will come "short-mounted" unless specified when ordering.



CHAMPION LAX

Champion LAX†

The Champion LAX has a great old-school feel.

Boots: Sure-Grip's S-75 leather, stitched soled boots with Velcro power-strap.

Chassis: Laser speed plates. Available in single or double-action, with or without toe stops (Elite version does not accommodate toe stops).

Wheels: Hyper Shaman 62mm speed wheels in green, red, natural, or blue.

Bearings: Bones REDS 7mm.

Sizes: Men's black 4-13.

Price: \$_____



DICE

Dice†

Great boot at a nice price.

Boots: Sure-Grip's S-85 leather, stitched soled boots with lace-cover.

Chassis: Rock double-action plates in your choice of 9 colors.

Adjustable toe stops.

Wheels: Clawz 62mm wheels in your choice of 9 different colors.

Bearings: Lynx ABEC-7 race.

Sizes: Men's black 4-13.

Price: \$_____



S-85 AVANTI POWER PLUS

S-85 Avanti Power Plus†

Classic look with modern performance.

Boots: Sure-Grip's S-85 leather, stitched soled boots with lace covers.

Chassis: Sure-Grip's all-new Avanti plate with 10 degree, double-action trucks. Plates come in aluminum or white magnesium.

Wheels: Sure-Grip 62mm Power Plus.

Bearings: Lynx ABEC-7 racing.

Sizes: Men's black 4-13.

Price: \$_____ (with aluminum Avanti plates)
\$_____ (with magnesium Avanti plates)



MENTOR

Mentor†

This is the skate that others try to follow.

Boots: Sure-Grip's S-85 leather, stitched soled boots with lace-cover.

Chassis: PowerTrac lightweight aluminum speed plates with micro-adjustable aluminum trucks.

Wheels: Hyper Shaman 62mm speed wheels.

Bearings: Qube Gold Swiss.

Sizes: Men's black 4-13.

Price: \$_____



PHOENIX AVENGER ZOMBIE

Phoenix Avenger Zombie†

Sure-Grip has gotten serious about their Derby skates with this new set-up.

Boots: The all-new Phoenix boot featuring leather upper, stitched soles, and Velcro power-straps.

Chassis: Sure-Grip's Avenger plates with double-action trucks at a 45 degree angles. Plates come in black aluminum or white magnesium (Magnesium is an additional \$50).

Wheels: All-new Sure-Grip Zombie wheels in your choice of 59mm, 62mm narrow, or 62mm wide in 89A, 92A, 95A or 98A.

Bearings: Lynx ABEC-7 racing.

Sizes: Women's black 5-10.

Price: \$_____ (Black Avenger) /
\$_____ (White Magnesium Avenger)

Note: Avenger plates will come "short-mounted" unless specified when ordering.



PHOENIX AVANTI ROLL-OUT

Phoenix Avanti Roll-Out†

Sure-Grip shows why they are now considered a leader in the Derby world.

Boots: Sure-Grip's Phoenix boot featuring leather uppers, stitched soles, and Velcro power-straps.

Chassis: Sure-Grip's all-new Avanti plate with 10 degree, double-action trucks. Plates come in aluminum or white magnesium.

Wheels: Sure-Grip Roll-Out wheels in 59x38mm or 62x38mm. Choice of purple (89A), teal (92A), red (95A), or green (98A).

Bearings: Lynx ABEC-7 racing.

Sizes: Women's black 5-10.

Price: \$_____ (with aluminum Avanti plates)
\$_____ (with magnesium Avanti plates)



VNLA

FREESTYLE



BRANDON PEREA FOR VNLA

ARE YOU GONNA STARE AT'EM OR GO SKATE?



STOMP 5
RollerDerby.
elite

www.rollerderby-elite.com



CHICAGO KID'S RINK SKATE

Chicago Kid's Rink Skate (1900/1905)*

This child's skate is for those who want a more traditional look.

Boots: Chicago Tigerlon boots.

Chassis: Chicago plates with adjustable trucks.

Wheels: Chicago 52mm urethane wheels.

Bearings: Semi-precision.

Sizes: Boy's black (1905) 10J-4;
girl's white (1900) 10J-4.

Price: \$_____



CHICAGO 400/405

Chicago 400/405*

This is a good entry-level skate for both children and adults.

Boots: Chicago synthetic boots.

Chassis: Chicago deluxe aluminum plates with double-action trucks and jump-bars.

Wheels: Chicago urethane rink wheels.

Bearings: Precision.

Sizes: Men's black (405) 1-13;
ladies white (400) 1-11.

Price: \$_____



CANDI GRL SABINA

REWIND
(U772BK)**Rewind (U772BK)***

Roller Derby's brand-new recreational skate that is great both in the rink and on the sidewalk.

Boots: Vinyl boot with comfort lining, embossed upper, and comfort heel.

Chassis: Nylon plates with double-action aluminum trucks.

Wheels: 58 x 33mm wheels in 82A durometer.

Bearings: ABEC-5 Carbon bearings.

Sizes: Men's black 3-12.

Price: \$_____

Candi Grl Sabina (U772)*

Roller Derby's brand-new recreational skate that is great both in the rink and on the sidewalk. Fun and stylish. **Boots:** Vinyl boot with comfort lining, embossed upper, and comfort heel.

Chassis: Nylon plates with double-action aluminum trucks.

Wheels: 58 x 33mm wheels in 82A durometer.

Bearings: ABEC-5 Carbon bearings.

Sizes: Ladies black/teal, mint, and white/pink 3-10.

Price: \$_____



CHICAGO 800/805

Chicago 800/805*

Chicago's top-of-the-line skate.

Boots: Leather-lined Chicago boots:

Chassis: Polished aluminum plates with jump-bars and adjustable toe stops.

Wheels: 58mm urethane wheels.

Bearings: ABEC-3.

Sizes: Men's black (805) 5-13; ladies white (800) 5-12.

Price: \$ _____



FAME

Fame*

Sure-Grip's Fame skate has a true classic style.

Boots: Sure-Grip's #37 high-top art boots.

Chassis: Rock plates with double-action trucks and adjustable toe stops. Juvenile sizes come with aluminum plates.

Wheels: Sure-Grip Fame 57mm artistic wheels.

Bearings: Sure-Grip ABEC-3.

Sizes: Men's black 8J-14; ladies white 9J-11.

Price: \$ _____

Sweet!



THE PACESETTER

The Pacesetter†

This skate has remained one of our most popular artistic-style skates.

Boots: High-top leather-lined boots.

Chassis: Dominion aluminum Marathon plates with double-action trucks.

Wheels: Pacesetter 57mm urethane wheels in clear pink, clear red, clear blue, black, or natural.

Bearings: ABEC-1 Chrome.

Sizes: Men's black (P385) 2-13; ladies white (P985) 3-10.

Price: \$ _____



CANDI GRL CARLIN

Candi Grl Carlin (U774)*

The all-new Carlin skate is great for indoors or out. Great color choices.

Boots: Brushed suede leather uppers in three color choices.

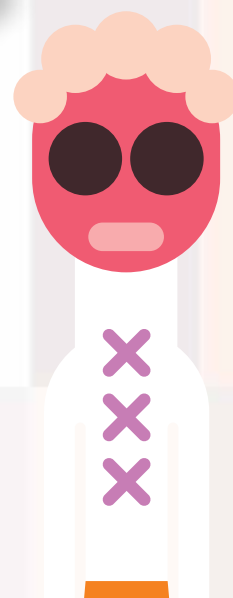
Chassis: Aluminum plates with double-action trucks and fixed toe stops.

Wheels: 66mm poured urethane wheels in 82A.

Bearings: ABEC-5

Sizes: Ladies blue, raspberry, and sea foam 3-11.

Price: \$ _____



SURE-GRIP BOARDWALK FAME



Sure-Grip Boardwalk Fame*

Don't sacrifice style for performance. The Boardwalk now is available with indoor Fame wheels.

Boots: Sure-Grip's suede leather boots in pink, purple, red, or teal.

Chassis: Rock double-action plates with adjustable toe stops.

Wheels: Sure-Grip's Fame wheels in new translucent colors. 57mm in 98A.

Bearings: Sure-Grip ABEC-3 bearings.

Sizes: Men's 4-10.

Price: \$ _____

THE SUPER-DUPER PACESETTER



The Super-Duper Pacesetter†

A souped-up version of the Pacesetter.

Boots: High-top leather-lined boots.

Chassis: Sure-Grip Super-X aluminum plates with double-action trucks.

Wheels: Pacesetter 57mm urethane wheels in clear pink, clear red, clear blue, black, or natural.

Bearings: Lynx ABEC-7.

Sizes: Men's black 2-13; ladies white 3-10.

Price: \$ _____

#37 AVANTI FAME



#37 Avanti Fame†

This is an all-new outfit featuring Sure-Grip's new Avanti plate.

Boots: Sure-Grip Fame #37 boot with soft-rolled collar and comfort-padded lining.

Chassis: Sure-Grip's all-new Avanti plate with 10 degree, double-action trucks. Plates come in aluminum or white magnesium.

Wheels: Sure-Grip's Fame wheels in 57mm.

Bearings: Lynx ABEC-7.

Sizes: Men's black 4-13; ladies white 4-11.

Price: \$ _____ (with aluminum Avanti plates)
\$ _____ (with magnesium Avanti plates)

#1300 AVANTI FO-MAC FREESTYLE



#1300 Avanti Fo-Mac Freestyle†

There is no need to have skates that look just like everybody else's.

Boots: Sure-Grip #1300 suede, tan or black boots.

Chassis: Sure-Grip's all-new Avanti plate with 10 degree, double-action trucks. Plates come in aluminum or white magnesium.

Wheels: FoMac Freestyle wheels in classic black.

Bearings: Lynx ABEC-7 bearings.

Sizes: Men's tan or black 3-13.

Price: \$ _____ (with aluminum Avanti plates)

\$ _____ (with magnesium Avanti plates)

THE AMERICAN

**The American†**

Whether you're an art skater, or someone who enjoys skating with their friends, the American is the skate for you.

Boots: Sure-Grip #73 leather, artistic boots.

Chassis: Sure-Grip Competitor plates with double-action trucks, jump bars, and adjustable toe stops.

Wheels: All-American Plus artistic wheels.

Bearings: Lynx ABEC-7.

Sizes: Men's black 4-13; ladies white 4-10.

Price: \$ _____

THE SLIDER

**The Slider†**

The Slider is for skaters who don't want a skate with too much grip.

Boots: Sure-Grip #73 leather, artistic boots.

Chassis: Sure-Grip Competitor plates with double-action trucks, jump bars, and adjustable toe stops.

Wheels: Fo-Mac Premier in Red, Black, or Brown.

Bearings: Lynx ABEC-7.

Sizes: Men's black 4-13; ladies white 4-10.

Price: \$ _____

#73 AVANTI ALUMINUM FAME

**#73 Avanti Aluminum Fame†**

Great skate for those late-night adult skates.

Boots: Sure-Grip #73 leather art boots.

Chassis: Sure-Grip's all-new Avanti plate with 10 degree, double-action trucks. Plates come in aluminum or white magnesium.

Wheels: Sure-Grip's Fame wheels in 57mm.

Bearings: Lynx ABEC-7.

Sizes: Men's black 4-13; ladies white 4-11.

Price: \$ _____ (with aluminum Avanti plates)
\$ _____ (with magnesium Avanti plates)

Oh Yeah!

#93 AVANTI MAGNESIUM FAME

**#93 Avanti Magnesium Fame†**

Great for those late-night skate marathons.

Boots: Sure-Grip #93 leather art boots

Chassis: Sure-Grip's all-new Avanti plate with 10 degree, double-action trucks. Plates come in aluminum or white magnesium.

Wheels: Sure-Grip's Fame wheels in 57mm.

Bearings: Lynx ABEC-7.

Sizes: Men's black 4-13; ladies white 4-11.

Price: \$ _____ (with aluminum Avanti plates)
\$ _____ (with magnesium Avanti plates)

FLO'S BLUE PLATE SPECIAL

**Flo's Blue Plate Special†**

Flo's been serving up this this fine skate for years.

Boots: Sure-Grip #73 leather, artistic boots.

Chassis: Sure-Grip Century plates with double-action trucks and adjustable toe stops.

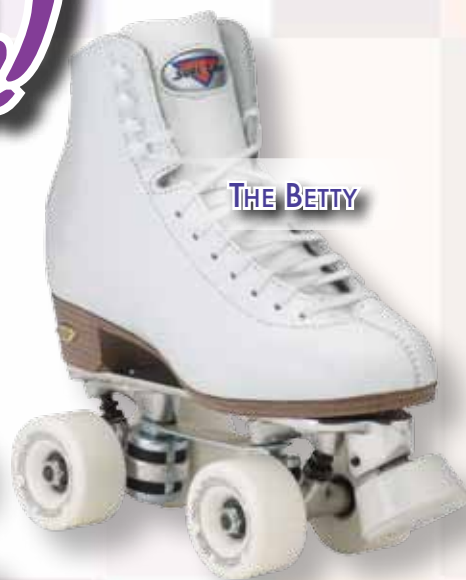
Wheels: RollerBones Team wheels in 57mm or 62mm.

Bearings: Lynx ABEC-7.

Sizes: Men's black 4-13; ladies white 4-11.

Price: \$ _____

THE BETTY

**The Betty†**

A true competitive skate.

Boots: Sure-Grip #73 leather, artistic boots.

Chassis: Sure-Grip Classic plates with double-action trucks with adjustable pivot and adjustable toe stops.

Wheels: RollerBones Team wheels in 57mm or 62mm.

Bearings: RollerBones REDS

Sizes: Men's black 4-13; ladies white 4-11.

Price: \$ _____

FUN ROLL ADJUSTABLE (I-359)



Fun Roll Adjustable (I-359)*

Beginner skate featuring a low-center of gravity and dual heel brakes to keep young skaters from falling backwards.

Boot: Plastic shell with deluxe-padded liners.

Chassis: Adjustable.

Wheels: Polyurethane wheels with rear wheels set wide for stability.

Bearings: G-Force 608ZB.

Sizes: Boys blue & yellow small (7J-11J), medium (11J-2); girls pink & white small (7J-11J), medium (11J-2)

Price: \$ _____



PACER ZTX

Pacer ZTX (P361/P961)*

Pacer's all-purpose kid's skate can be used indoors or out.

Boots: Pacer children's boot with ankle support straps.

Chassis: Pacer plastic plates.

Wheels: Pacer urethane wheels.

Bearings: Sealed.

Sizes: Boy's black 12J-5; girl's white 12J-5.

Price: \$ _____



CHICAGO SIDEWALK SKATE



Chicago Sidewalk Skate (100/105)*

This skate can be used in the rink or on the sidewalk. It will help a child gain confidence skating on their own skates.

Boots: Chicago boots with padded ankle collar and Velcro strap.

Chassis: Chicago plates with adjustable trucks.

Wheels: Chicago wheels.

Bearings: Semi-precision.

Sizes: Boy's black 12J-5; girl's white 12J-5.

Price: \$ _____



CHICAGO ADJUSTABLE

Chicago Adjustable Quad (210/215)*

Adjustable skate from Chicago.

Boots: Adjustable shell with breathable mesh liners and adjustable micro-ratchet buckles.

Chassis: Easy push-button adjustable plates.

Wheels: Chicago all-purpose wheels.

Bearings: 608Z Semi Precision.

Sizes: Boys blue/silver/black small (10J-13J), medium (1-4); girls purple/silver/white small (10J-13J), medium (1-4).

Price: \$ _____

Let's roll!



CHICAGO 500/505 TRAINING COMBO

Chicago 500/505 Training Combo*

Comes with all you need to get started skating. The 2-in-1 skate easily converts from a trainer to an inline.

Included: Trainer skates, helmet, backpack, knee pads & wrist guards.

Upper: Hard-shell adjustable upper with padded liners.

Sizes: Boys blue small (10J-13J), medium (1-4); girls pink & purple small (10J-13J), medium (1-4).

Price: \$_____

Rewind (U772BK)*

Roller Derby's brand-new recreational skate that is great both in the rink and on the sidewalk.

Boots: Vinyl boot with comfort lining, embossed upper, and comfort heel.

Chassis: Nylon plates with double-action aluminum trucks.

Wheels: 58 x 33mm wheels in 82A durometer.

Bearings: ABEC-5 Carbon bearings.

Sizes: Men's black 3-12.

Price: \$_____

REWIND
(U772BK)

PACER XT-70

Pacer XT-70 (P960)*

This adjustable skate from Pacer can be used indoors or out, and it is great for growing children.

Boots: Adjustable shells with removable comfort liners.

Chassis: Plastic, adjustable plates.

Wheels: Polyurethane injected wheels.

Bearings: Long Life

Sizes: Adjustable 12J-6. Call for sizing details.

Prices: \$_____



CANDI GRL SABINA



CANDI GRL CARLIN

Candi Grl Sabina (U772) *

Roller Derby's brand-new recreational skate that is great both in the rink and on the sidewalk. Fun and stylish. **Boots:** Vinyl boot with comfort lining, embossed upper, and comfort heel.

Chassis: Nylon plates with double-action aluminum trucks.

Wheels: 58 x 33mm wheels in 82A durometer.

Bearings: ABEC-5 Carbon bearings.

Sizes: Ladies black/teal, mint, and white/pink 3-10.

Price: \$_____

Candi Grl Carlin (U774)*

The all-new Carlin skate is great for indoors or out. Great color choices.

Boots: Brushed suede leather uppers in three color choices.

Chassis: Aluminum plates with double-action trucks and fixed toe stops.

Wheels: 66mm poured urethane wheels in 82A.

Bearings: ABEC-5

Sizes: Ladies blue, raspberry, and sea foam 3-11.

Price: \$_____



ASPHALT JUNKIE

Asphalt Junkie†

Hit the sidewalk and enjoy the fresh air in this affordable, outdoor model.

Boots: Chicago's model 400/405 synthetic high-top boots.

Chassis: Chicago aluminum plates with double-action trucks and jump bars.

Wheels: Please note that this skate may come with Sure-Grip Aerobic wheels. See page 39 for color choices.

Bearings: ABEC-1.

Sizes: Men's black 1-13; women's white 1-11.

Price: \$ _____



GT-50 OUTDOOR

GT-50 Outdoor†

We've taken one of the most popular rink skates, and we've sent it outside to play.

Boots: Rock GT-50 boots in either black, white, or grey.

Chassis: Rock double-action plates with adjustable toe stops.

Wheels: Your choice of Atom Pulse wheels in blue, green, pink, purple, or smoke.

Bearings: Lynx ABEC-7 racing.

Sizes: Men's black 1-15; men's white 1-10.

Price: \$ _____ (sizes 14 & 15 / \$ _____)



REBEL OUTDOOR

Rebel Outdoor†

Take your rebellious side outside to the masses.

Boots: Sure-Grip leather boots with elastic tongue stays, ankle protection, and box-toe comfort-fit.

Chassis: Sure-Grip Probe plates with reverse kingpins and adjustable toe stops.

Wheels: Atom Road Hog 66mm outdoor speed wheels.

Bearings: Lynx ABEC-7 racing.

Sizes: Men's black 3-12; men's white 4-11.

Price: \$ _____



BREATH OF FRESH AIR

Breath of Fresh Air†

A true outdoor skate for the recreational skater.

Boots: Leather-lined high-top boots.

Chassis: Sure-Grip Super-X plates with double-action trucks.

Wheels: Please note that this skate may come with Sure-Grip Aerobic wheels. See page 39 for color choices.

Bearings: Lynx ABEC-7 racing.

Sizes: Men's black 1-13;

ladies white 1-10.

Price: \$ _____